

IsatPhone²

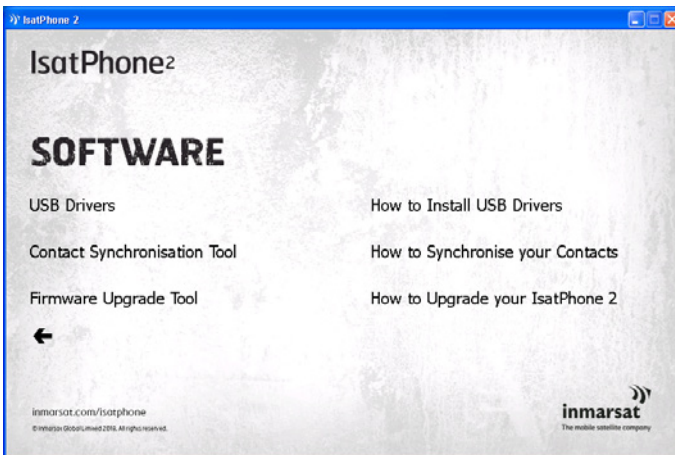
HOW TO

Install USB Drivers

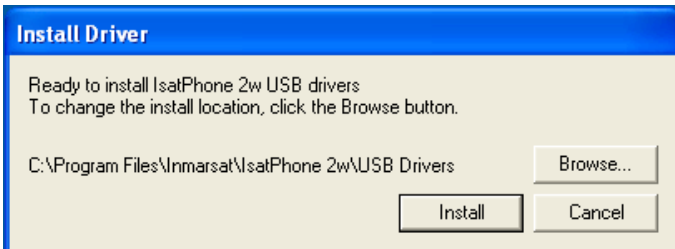
You need to install the USB Drivers on your computer before installing the Contact Synchronisation and Firmware Upgrade Tools. Installing the USB Drivers also reduces your phone's charging time.

The tool supports Windows 10, Windows 8, Windows 7 and Windows XP.

To install the USB Drivers on your computer, perform the following procedure:



Select **Software > USB Drivers** from the USB drive.



Click **Install**.
The **Software Installation** dialogue box appears.



Click **OK**.
The drivers are successfully installed.

Installing the new hardware for Windows XP

To install the new hardware for Windows XP, perform the following procedure:

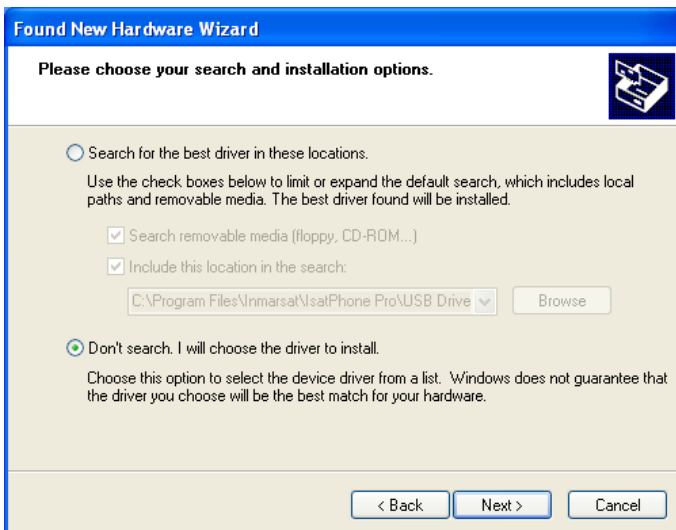


Connect your IsatPhone 2 to your computer with the supplied USB cable. If your phone is not switched on, switch it on now.

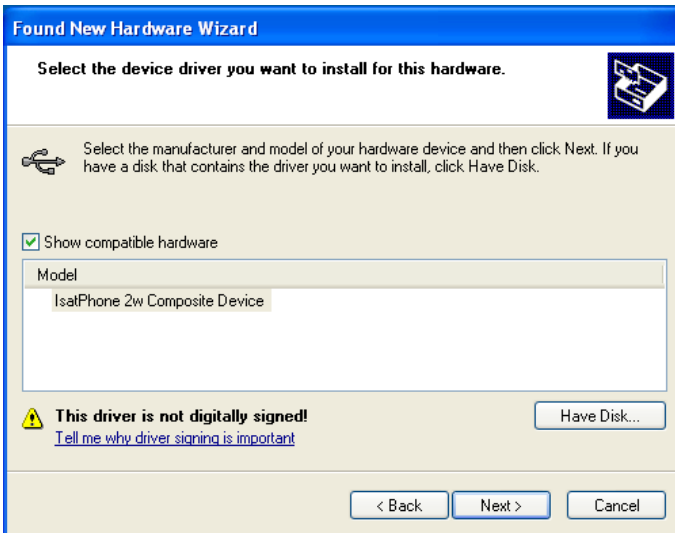
When the USB cable is connected, the following pop-up message will be displayed: 'New hardware found: IsatPhone 2w Composite Device.'

The **Found New Hardware Wizard** appears.

Select **Install from a list or specific location (Advanced)** and click **Next**.



Select **Don't search. I will choose the driver to install** and click **Next**.



Click **Next** again.

The **Hardware Installation** dialogue box appears.



The **Found New Hardware Wizard** installs the software.

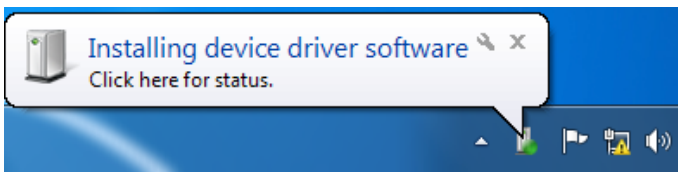


Click **Finish**. The **System Settings Change** dialogue box appears.

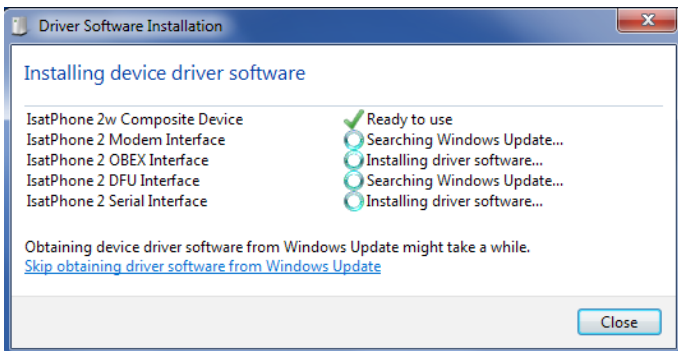
Disconnect the USB cable from your computer and your phone.

Installing the new hardware for Windows 7

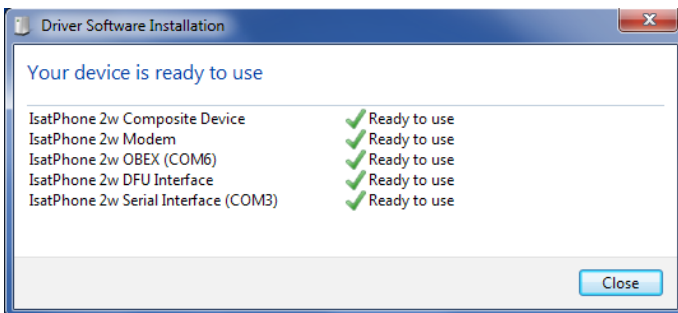
Once the device is connected, the driver's installation will automatically start for the device connected



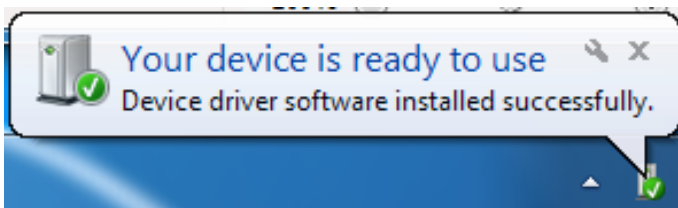
Click on the icon from the task bar to view the installation status.



The installation status window is displayed when the icon on the task bar is selected.



Installation successful notification.

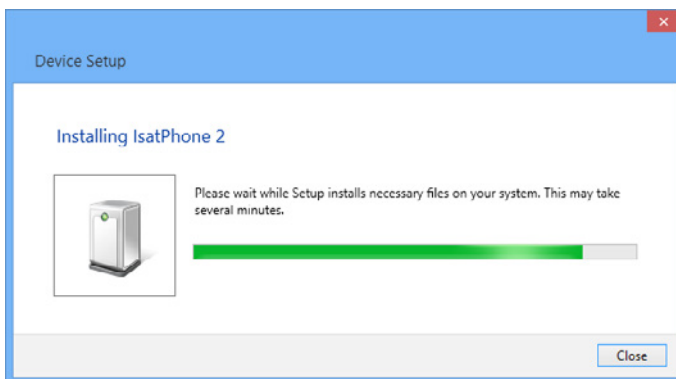


Installing the new hardware for Windows 8 and Windows 10

Once the device is connected, the driver's installation will automatically start for the device connected.



Click on the icon from the task bar to view the installation status.



The installation status window is displayed when the icon on the task bar is selected.

inmarsat.com/isatphone

While the information in this document has been prepared in good faith, no representation, warranty, assurance or undertaking (express or implied) is or will be made, nor will responsibility or liability (howsoever arising) be accepted by the Inmarsat group or any of its officers, employees or agents in relation to the adequacy, accuracy, completeness, reasonableness or fitness for purpose of the information in this document. All and any such responsibility and liability is expressly disclaimed and excluded to the maximum extent permitted by applicable law. INMARSAT is a trademark owned by the International Mobile Satellite Organisation licensed to Inmarsat Global Limited. All other Inmarsat trademarks in this document, including the Inmarsat LOGO, are owned by Inmarsat Global Limited. In the event of any conflict between the words of the disclaimer and the English version from which it is translated, the English version shall prevail. © Inmarsat Global Limited 2018. All rights reserved. IsatPhone 2 How to Install USB Drivers (Model 2.1) May 2018.