

# Using Linksys RV042 for failover with BGAN and FleetBroadband

Version 01

08.10.09

[inmarsat.com](http://inmarsat.com)

Whilst the information has been prepared by Inmarsat in good faith, and all reasonable efforts have been made to ensure its accuracy, Inmarsat makes no warranty or representation as to the accuracy, completeness or fitness for purpose or use of the information. Inmarsat shall not be liable for any loss or damage of any kind, including indirect or consequential loss, arising from use of the information and all warranties and conditions, whether express or implied by statute, common law or otherwise, are hereby excluded to the extent permitted by English law. INMARSAT is a trademark of the International Mobile Satellite Organisation, Inmarsat LOGO is a trademark of Inmarsat (IP) Company Limited. Both trademarks are licensed to Inmarsat Global Limited. © Inmarsat Global Limited 2009. All rights reserved.

# Contents

1	Overview	1
2	Key Features	1
3	Benefits to BGAN or Fleet Broadband Users	1
4	Typical Users	1
5	Configuration Diagram	2
6	Step by Step Setup	2
	6.1 Linksys Setup	2
	6.2 BGAN Setup	5
7	Further details and support	5



## 1 Overview

The Cisco® RV042 Dual WAN VPN Router is an advanced connection-sharing network solution for your small business needs. Like any router, it lets multiple computers in your office share a connection to a public or private network. However, with dual WAN ports, the Cisco RV042 lets you use a second connection as a backup to help you stay connected, or it can be used to access a second provider to increase available bandwidth and balance traffic.

## 2 Key Features

Users could be using VSAT or other terrestrial network as primary link and needed a backup link using BGAN or Fleet Broadband. The router is able to automatically switch over to BGAN or Fleet Broadband when the primary link is interrupted. It will automatically switch over to the primary link once it come back online.

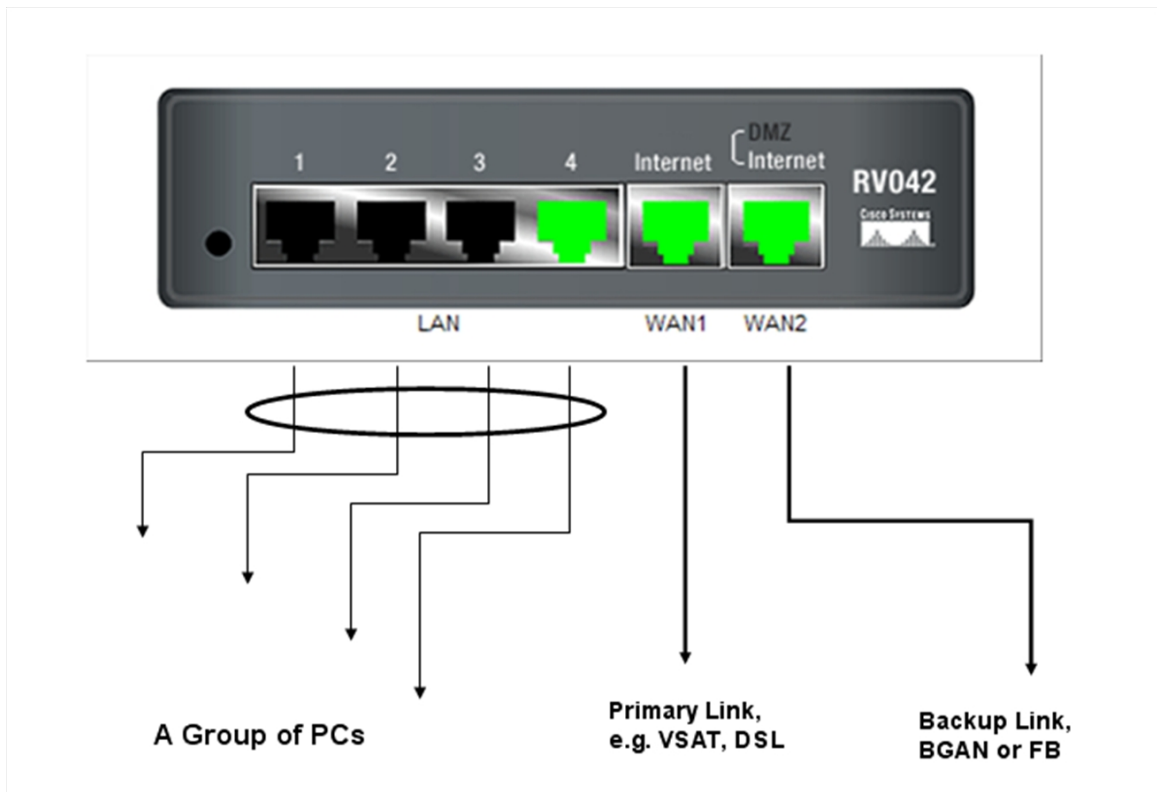
## 3 Benefits to BGAN or Fleet Broadband Users

- Able to deploy BGAN in a fixed or semi fixed situations
- Automatic switch over from Primary link to BGAN or Fleet Broadband and back to primary without user intervention
- Minimum down time (less than 20 sec to key up the PPPoE connection for FB and BGAN) when switching from Primary to BGAN / Fleet Broadband and back
- Do not need to keep the BGAN or Fleet Broadband data connection on all the time, key up the data connection only when needed.

## 4 Typical Users

- Shipping Fleet
- International Construction, manufacturing and mining companies
- Finance Institutions
- Oil and Gas platforms

## 5 Configuration Diagram

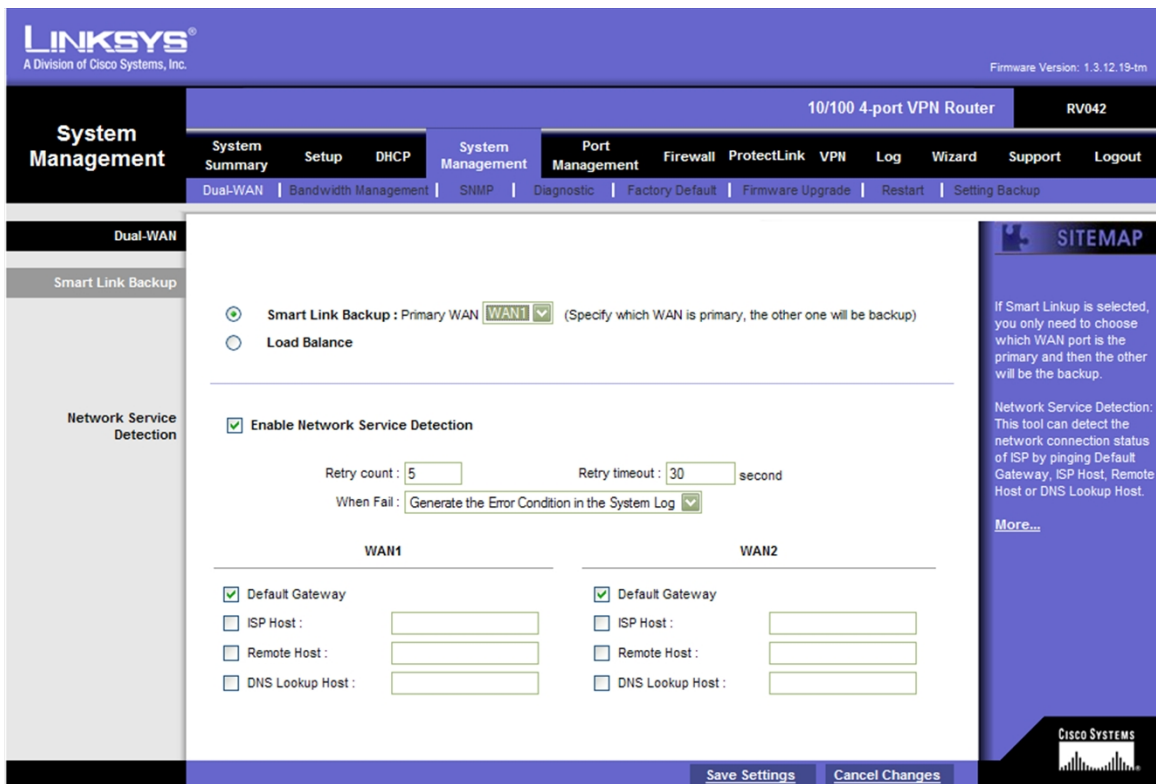


## 6 Step by Step Setup

### 6.1 Linksys Setup

Before you attempt to log into the web-based Administration, please verify the following.

- Your browser is configured properly (see below).
- Disable any firewall or security software that may be running.
- Confirm that you have a good link LED where your computer is plugged into the Router.
- You will be assigned an IP address via DHCP
- To access the Router's management interface, enter the Router IP address in your web browser  
**http://192.168.1.1.**
- You will be prompted with a Login screen, the default Username is **admin** and the default password is **admin** click the **OK** button
- Once you have logged in you will see the following screen.



- h. Click on **System management** and then select the option for **Dual WAN**
- i. Under Dual WAN **Smart Link Backup** and use WAN 1 as primary link.
- j. Again under the system management menu, under '**Bandwidth Management**' input the maximum bandwidth of WAN1 and WAN 2.
- k. Click on **Setup Wizard** to start setup process, click on **Launch Now**
- l. Select **Dual WAN** on the following screen and click **Next**
- m. Enter **Domain name** and **Host name** if required for your if required by your ISP. **Leave blank if not required.**
- n. Select **WAN1** connection type, follow the next couple of screens to configure the connection type.
- o. Repeat for **WAN2**, follow the screens again to configure the connection type.

Note: Although the router has the capabilities to use 2 Internet connections we generally only use the 1<sup>st</sup> configuration. You must progress through these configuration screens in order to get to the "Save Settings" screen Click "Next" to continue with the configuration.

- p. Select Connect on demand, the connection will be disconnected after specified period of inactivity (Max Idle Time). Connect on demand enables router to automatically enable re-established your connection as soon as you attempt to access the internet again.

**PPPoE (For WAN2)**

Connect on demand ; Max. Idle Time  Min.

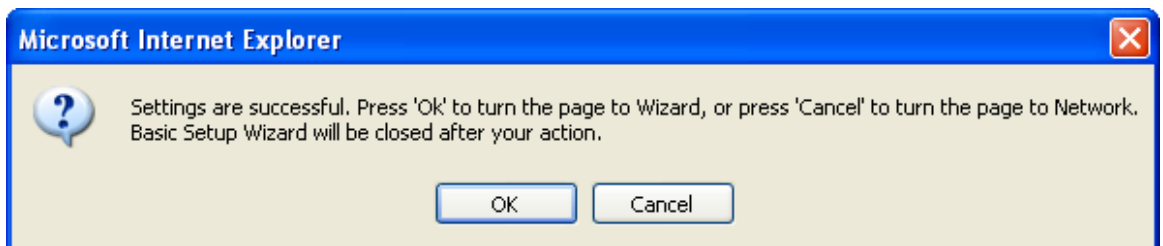
Keep alive ; Redial period  Sec.

Keepalive Interval  Sec. (Range: 5~9999 Sec.)

Keepalive Retry Times  Times (Range: 1~99 Times)

---

- q. Click **Next** then select "**Save Settings**" in order to complete this step. Then Click **OK** on the following pop up



## 6.2 BGAN Setup

Note: The router is setup to connect to BGAN and FB through PPPoE. At the moment, only Thrane Explorer 300, 500, 700, 727 and Sailor terminals have implemented the PPPoE feature.

- a. Access the web interface on the default IP address using your web browser **http://192.168.0.1**
- b. Click on **Settings** on the Navigation bar on the left and then click on **LAN**
- c. Select **PPPoE** and change the radio button to **enable** and **Apply**
- d. Click on **LAN**, scroll down and disable **Automatic Activation**

PROFILE CIDS	
Profile	Cid
Standard	1
Streaming 128	5

- e. You will need to register the terminal on the network, either automatically or manually for PPPoE to work

## 7 Further details and support

**Inmarsat contact:**

Email: [Customer\\_care@inmarsat.com](mailto:Customer_care@inmarsat.com)