

JRC FB 500 terminal JUE-500 new software ver. 11.61 release

JRC has released new software version: SYS11.61 for Fleet Broadband JUE-500 mobile terminals.
Please make sure to use JRC Launcher V2.0.5.0 with new SYS11.61.

Important Notice

Please make sure to update to the software SYS11.61 before rollover occurs in the internal GPS receiver on September 8, 2024. The following issues will be caused by the rollover:

- The date information in JUE-500 and the date recorded in variety of logs will go back 1024 weeks.
- Communication failure will occur due to registration processing failure to the Inmarsat network.

Notes for software update

- Before updating software to SYS11.61, write down and record all the settings defined in both “SMS-Setting” and “ADMIN” menu on Handset and/or JRC Launcher (Please use the setting list from page 20). After updating to SYS11.61, restore the settings by referring to those recorded before the update.
- Service type of TEL2 port will change to “Voice” setting after updating to SYS11.61. Confirm and set service type of TEL2 port properly according to the connected equipment (telephone or facsimile) after this update.
- Make sure to use JRC Launcher V2.0.5.0 for SYS11.61.

Changes from SYS11.54 to SYS11.61

Following item has been improved:

- Improved the issue that the date information in JUE-500 will go back 1024 weeks and communication failure will occur due to rollover that will occur in internal GPS receiver on September 8, 2024.
- Improved the phenomenon that JUE-500 BDE cannot stop receiving the satellite carrier under specified condition during JUE-500 satellite searching.
- Improved the phenomenon that when using SYS11.54, the DHCP count value (the number of IP addresses assigned by JUE-500) is always maximum value (254 - “BASE IP” + 1) even if user has changed it.
- Improved the phenomenon that when using SYS11.54, Packet Detect Activate function always returns to disabled even if user has changed it to enabled.

- Improved the phenomenon that when using the SIM card locked by PIN code, JUE-500 repeats satellite search (the terminal status repeats “SAT SEARCH” and “REGISTERING”) under the following conditions:
 - When user enters the wrong PIN code at startup
 - When user leaves without entering the PIN code at startup
 - When JUE-500 starts satellite search
- Improved that when JUE-500 receives the information with invalid position or date/time from the internal GPS receiver, JUE-500 treats it as information whose positioning status is UNFIX.
- Improved that when the internal GPS receiver’s positioning status changes from “2D FIX or 3D FIX” to “UNFIX or COLD START”, JUE-500 displays the current date/time continuously without going back to the date/time when the GPS receiver’s positioning status was last “2D FIX or 3D FIX”.
- Improved the phenomenon that “GPS Status” in Unit Info may show “2D FIX” or “3D FIX”, even though JUE-500 cannot get valid GPS information and the status of JUE-500 is “POSITION?”.
- Improved the phenomenon that the phone connected to TEL3 to TEL6 port in may make a strange noise during a Voice call.
- Improved the following phenomena that occur in OIU Web UI:
 - In [Packet Detect Activate] screen, even if the user changes the [Valid] value from OFF to ON, the user cannot input the value to the related [Base IP], [Count] and [Profile] setting boxes.
 - In [Always Activate] screen, even if the user changes the [Profile] value from Disable to Profile X, the user cannot input the value to the related [Local IP] setting boxes.
 - When the user clicks [8. SMS] from left menu panel to display the [SMS] screen, an internal error occurs.
 - The irrelevant value is filled in [Username] field or [Password] field in [Standard] screen etc. automatically due to the autocomplete feature of the browser.
 - The latest value is not output due to the cache of the browser when the file is output in [USER REGISTRATION] screen etc.
 - In [CALL LOG] screen or [USER REGISTRATION] screen, the items output to the file are different from the items displays on the screen.
- Improve the phenomenon that ADE software update may fail due to the failure of reset IC implemented in ADE.

Software updating procedure

Update JUE-500 software with following procedure a) to d).

* Do not connect any router or other equipment, only JUE-500 OIU is allowed to connect, between JUE-500 and a PC when updating JUE-500. Also, PC must be on the same network as JUE-500.

a). Confirm the connection

JUE-500 software updating is executed by a PC with dedicated application for PC.

Prepare a PC and connect it to your JUE-500. (For details, refer to “1. Confirm the connection”)

* Windows XP/Vista/7 OS is required.

b) Download the latest software for JUE-500

Confirm the website to check whether the latest software is uploaded or not, from the PC connected to Internet. Download if the latest software is uploaded. (For details, refer to “2. Downloading the latest software”)

c) Update JUE-500 software

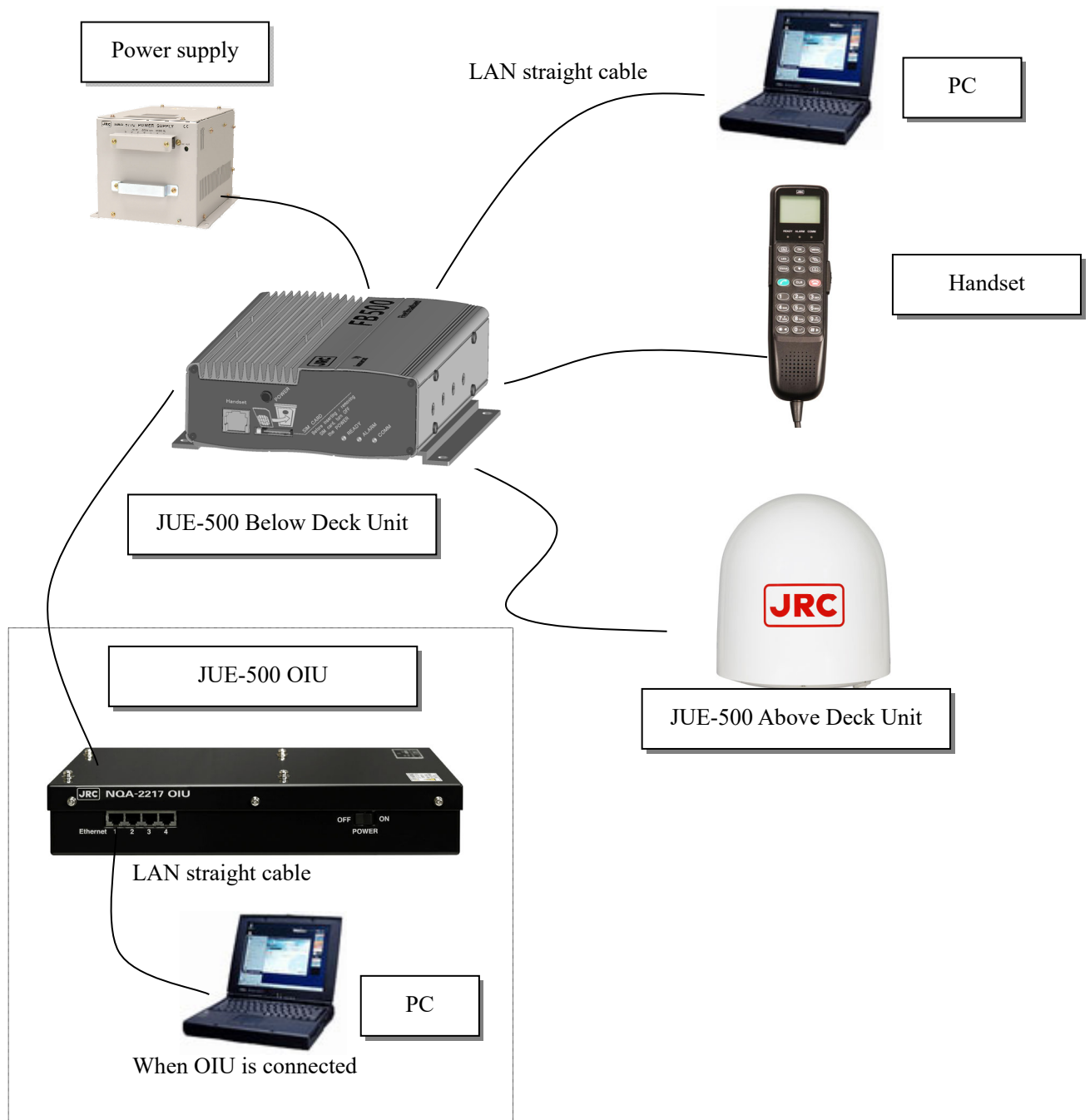
Update the JUE-500 software by the downloaded software. (For details, refer to “3. Update JUE-500 software”)

d) Confirm the updated software version

Confirm the software version after updating, to check that JUE-500 software is correctly updated or not. (For details, refer to “4. Confirm the update software version”)


1. Confirm the connection

1. Prepare a PC and connect it to Ethernet port of JUE-500, with LAN straight cable. When the OIU is connected to the BDE, connect LAN straight cable with the OIU's Ethernet port. * Do not connect any router or other equipment, only JUE-500 OIU is allowed to connect, between JUE-500 and a PC when updating JUE-500. Also, PC must be on the same network as JUE-500.

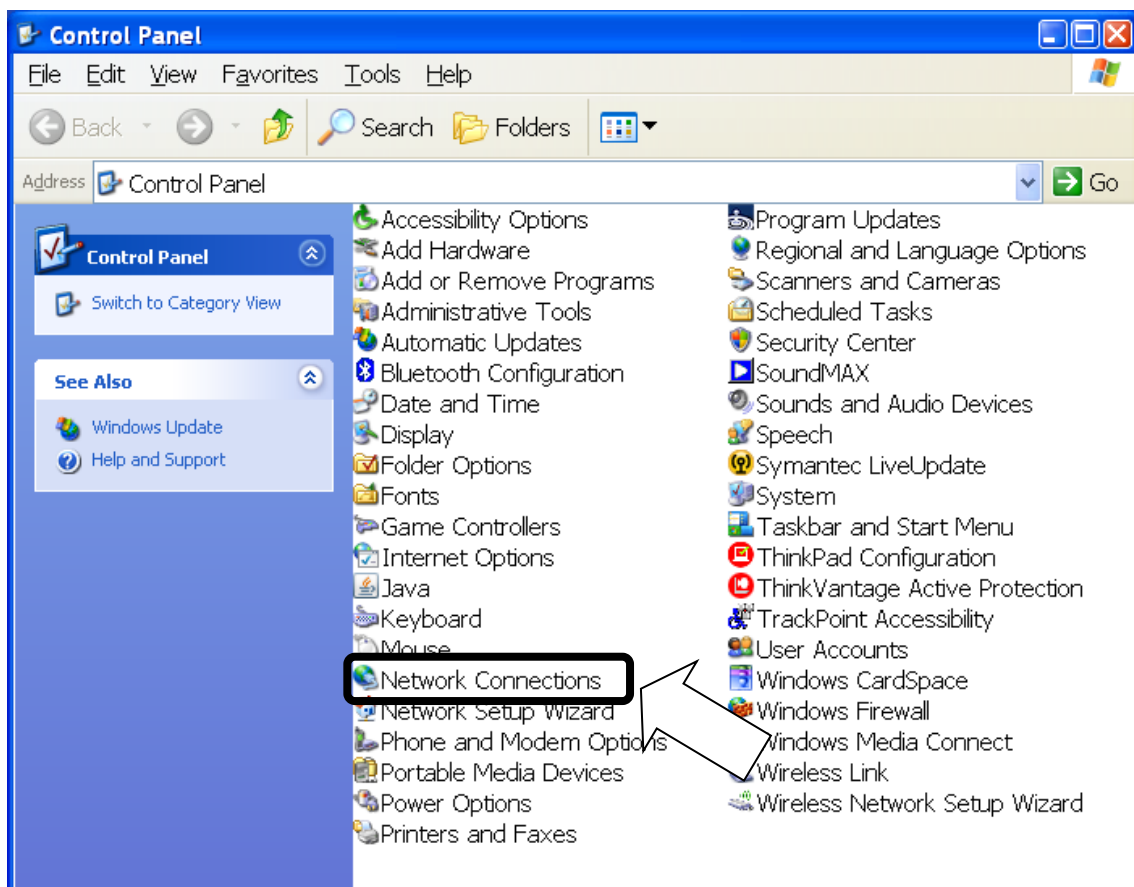


2. Set the LAN port IP address (being connected to Ethernet port of JUE-500) of your PC, to be on the same network as JUE-500 by the following procedure.

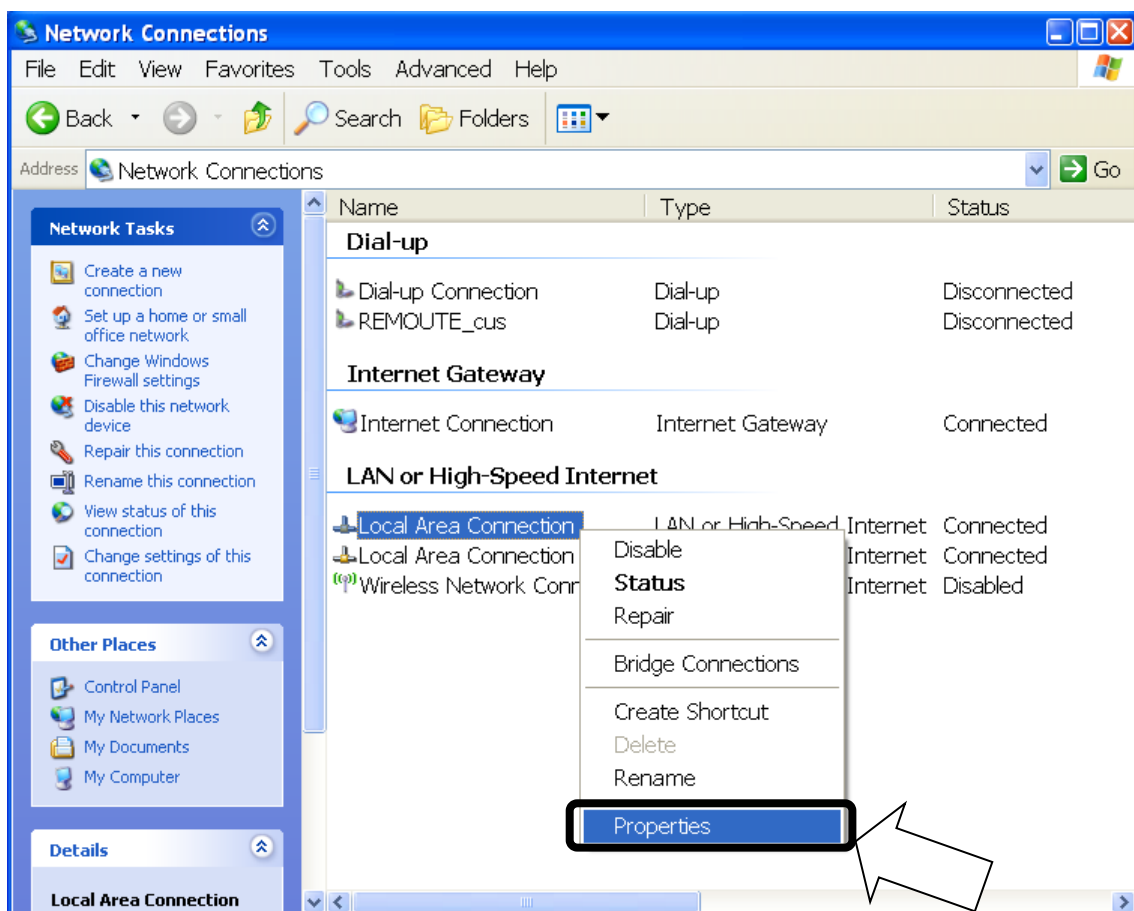
NOTE

- Skip this procedure when you have already set the LAN port to DHCP (set the IP address setting as [Obtain an IP address automatically]) and BDE's DHCP setting enable.
- Current BDE's DHCP setting can be referred at the Handset menu, <9> ADMIN - Input secret code (default value 0001) - <3> Port - <3> Ethernet - BDE's IP address (press OK) - BDE's subnet mask (press OK) - DHCP setting. Press  on hook button and close the menu after you confirm the DHCP setting.

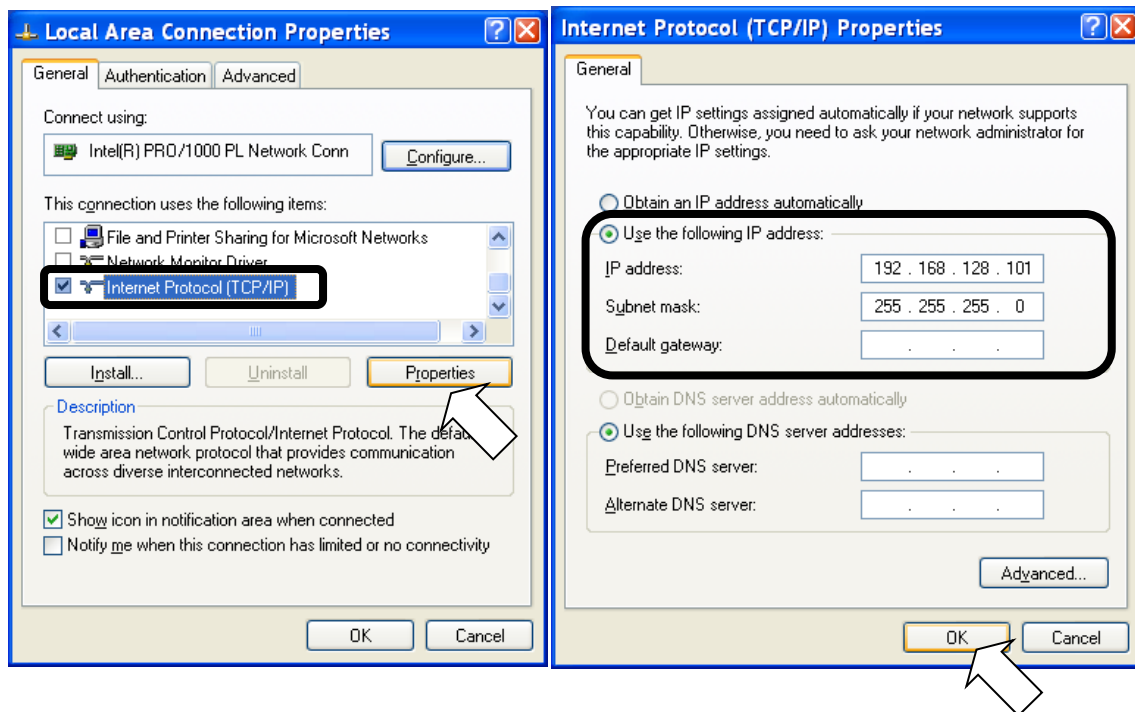
- i). Confirm BDE's IP address from the Handset.
 - BDE's DHCP setting can be referred at the Handset menu, <9> ADMIN - Input secret code (default value 0001) - <3> Port - <3> Ethernet.
- ii). Select [start]-[Control Panel].
 - [Control Panel] window is displayed.



- iii). Double click [Network Connections].
 - [Network Connections] window is displayed.
- iv). Select [Local Area Connection] and right-click, then click [Properties] from displayed menu.
 - [Local Area Connection Properties] dialogue box is displayed.
 - Confirm that [General] tab is displayed on the front of the screen.



- v). Select [Internet Protocol (TCP/IP)] and click [Properties] button.
 - [Internet Protocol (TCP/IP) Properties] dialogue box is displayed.
 - Select [Use the following IP address] and input [IP address] and [Subnet mask] to be on the same network as JUE-500. Do not input any IP address for [Default gateway].
 - e.g. When the BDE's IP address is 192.168.128.100
 - Input 192.168.128.101 for [IP address] and 255.255.255.0 for [Subnet mask].
 - Select [Use the following DNS server addresses] and do not input any DNS addresses for [Preferred DNS server] and [Alternate DNS server].



- vi). Click [OK] button.
 - Screen is returned to [Local Area Connection Properties] dialogue box.
- vii). Click [OK] button.
 - If message of rebooting is displayed, reboot a PC.

2. Downloading the latest software

The latest software of JUE-500 is uploaded on the HP of Inmarsat.

The URLs are as follows:

- Inmarsat

<https://www.inmarsat.com/en/support-and-info/support/fleetbroadband-firmware.html>

If the software's version on the HP is larger than the JUE-500's software version, download the software from HP.

Software version of JUE-500 can be displayed on the Handset screen with following operation:

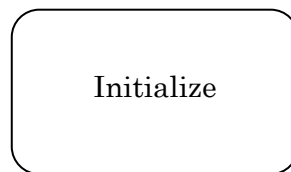
<1> Status - <5> Unit Info - <2> Mainte No.- SYS

3. Update JUE-500 software

Note

- Do not turn OFF the power supply of JUE-500 and/or PC during the software forwarding or updating
- Software forwarding or updating takes up to 25 minutes.

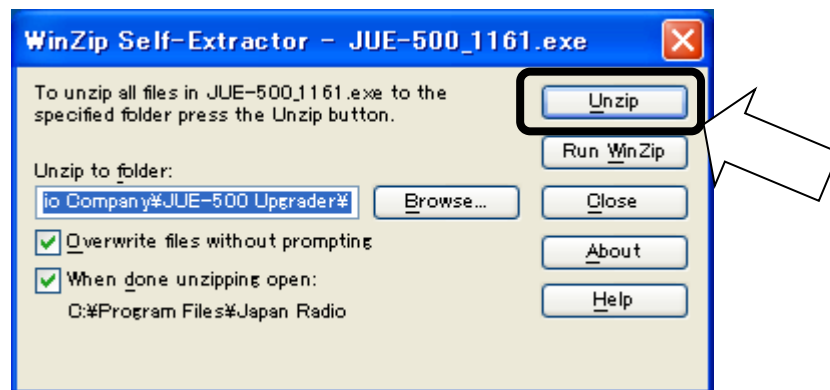
1. Activate your JUE-500 and confirm that initialization is completed.
* [Initialize] is displayed during initialization on the Handset screen.



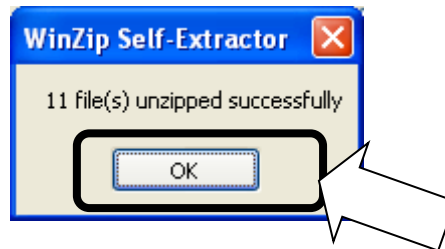
2. Execute the downloaded software file [JUE-500_1xxx.exe]. Double click the icon.



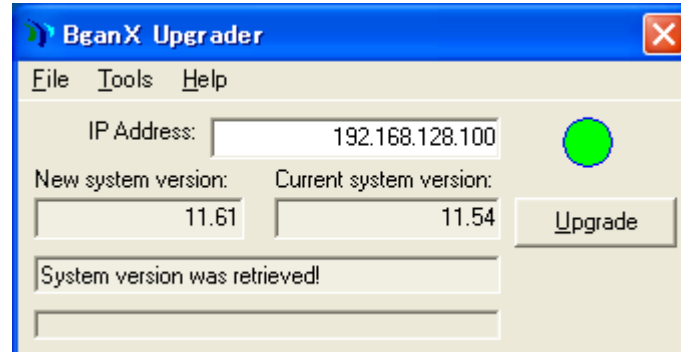
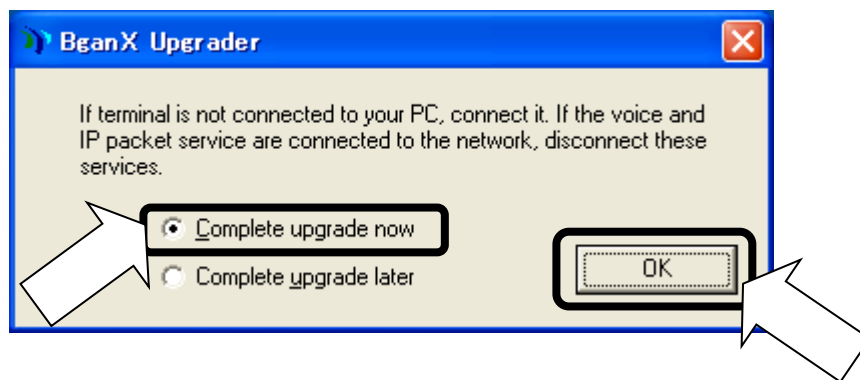
3. Following dialog box is displayed. Click [Unzip] button.
Default unzip folder is C:\Program Files\Japan Radio Company\JUE-500 Upgrader\.



4. Following dialog box is displayed. Click [OK] button.

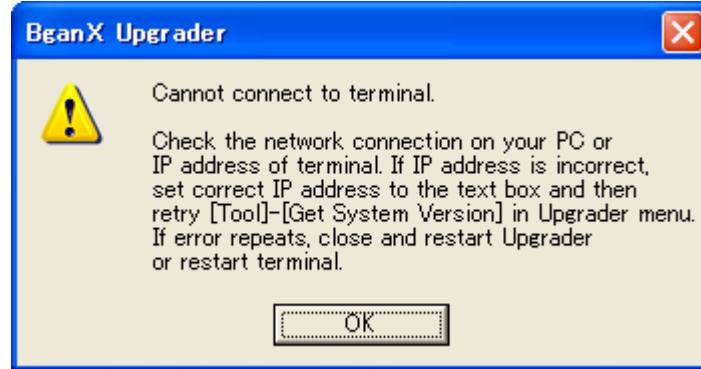


5. Select [Complete upgrade now] and click [OK] button. [BganX Upgrader] is activated.



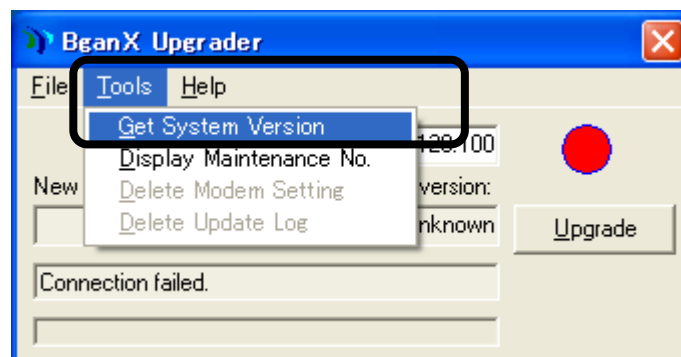
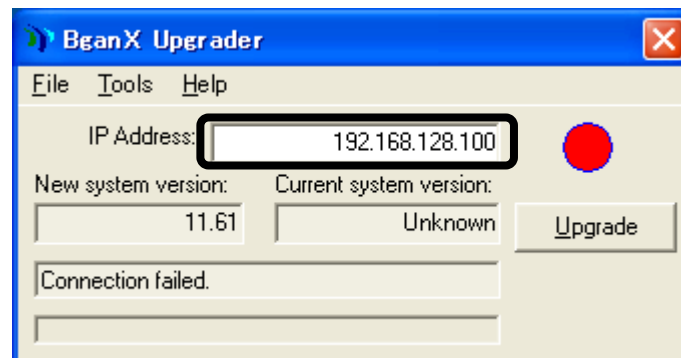
5.1. If the PC cannot connect with BDE

If your PC cannot connect with BDE, below screen is displayed.



In this case, assumed cause is the BDE's IP address is changed.

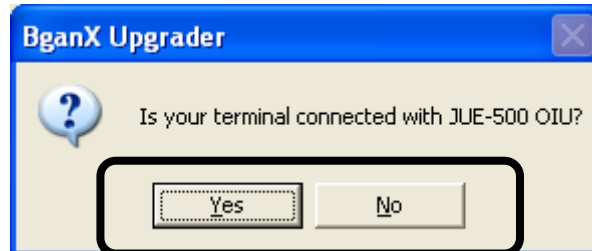
Set the current BDE's IP address into the textbox which displays below IP address, and then select [Tool] – [Get System Version] from Window's menu. Current BDE' IP address can be referred at the Handset menu, <9> ADMIN - Input secret code (default value 0001) - <3> Port - <3> Ethernet.



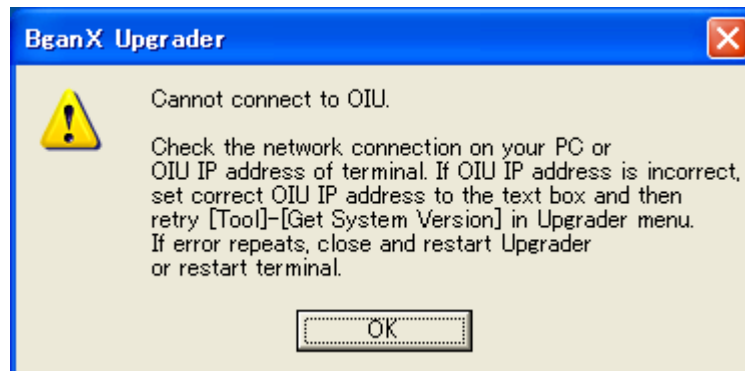
5.2. If the PC cannot connect with the OIU

If your PC cannot connected with the OIU, below screen is displayed.

Select [Yes] when the OIU is connected with BDE, and select [No] when the OIU is not connected with BDE.



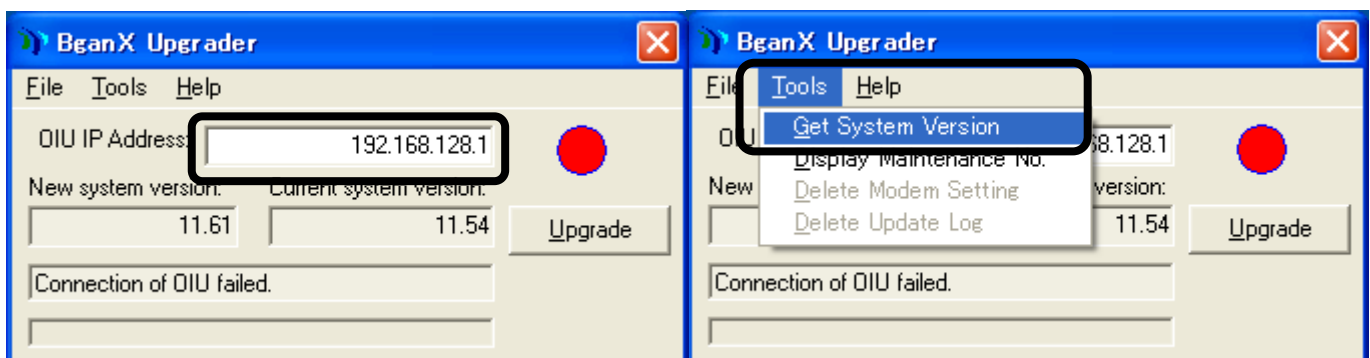
When [Yes] is selected, below screen is displayed.



In this case, assumed cause is the OIU's IP address is changed.

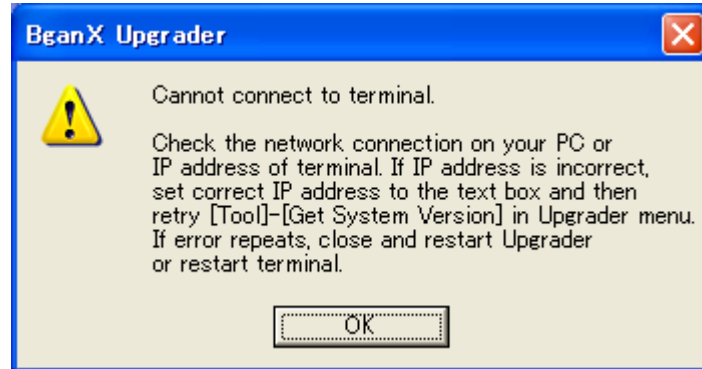
Set the current the OIU's IP address into the textbox which displays below IP address, and then select [Tool] – [Get System Version] from Window's menu

Current OIU's IP address can be referred at the Handset menu, <9> ADMIN - Input secret code (default value 0001) - <7> Option - <6> IP



5.3. If the PC cannot still connect with BDE after the BDE IP confirmation

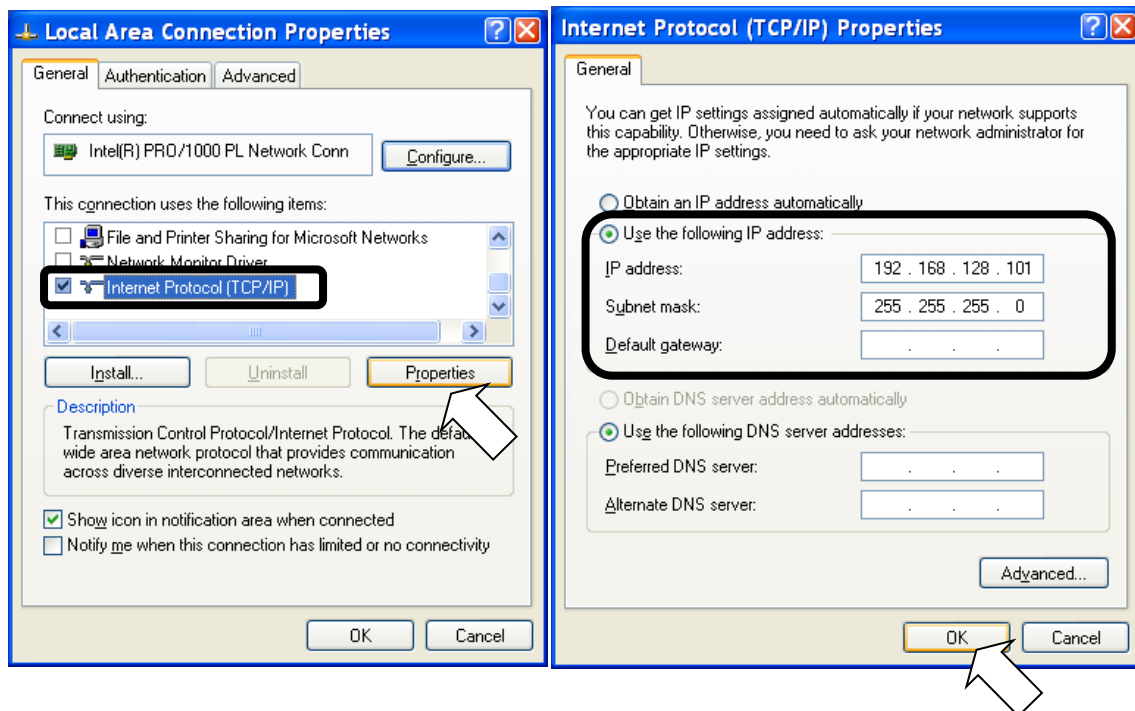
If your PC cannot connect with BDE after the BDE IP confirmation, below screen is displayed.



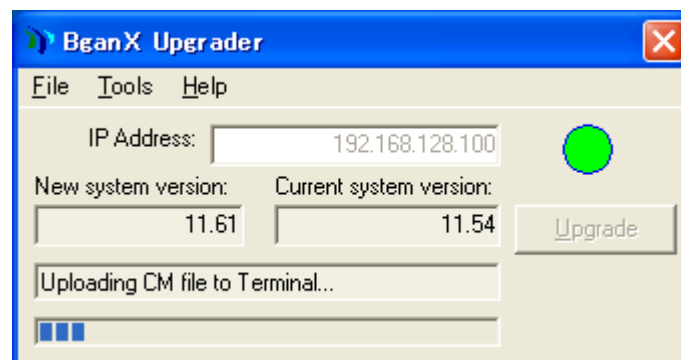
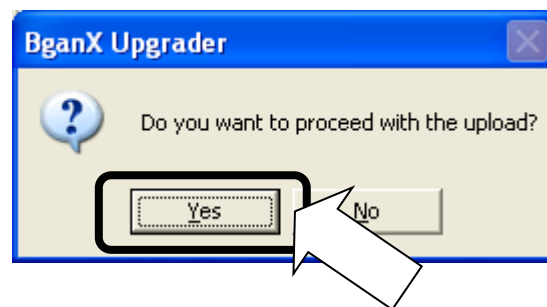
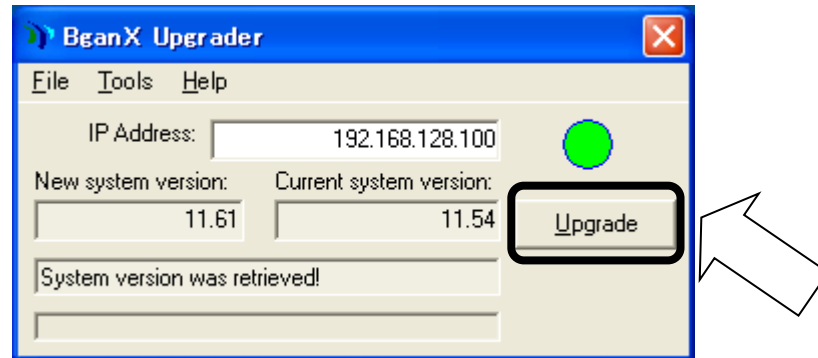
In this case, assumed cause is the PC's IP address is changed.

Confirm the PC's IP address is set to be on the same network as the BDE. Refer to "1. Confirm the connection" step (2) to confirm PC's IP address setting.

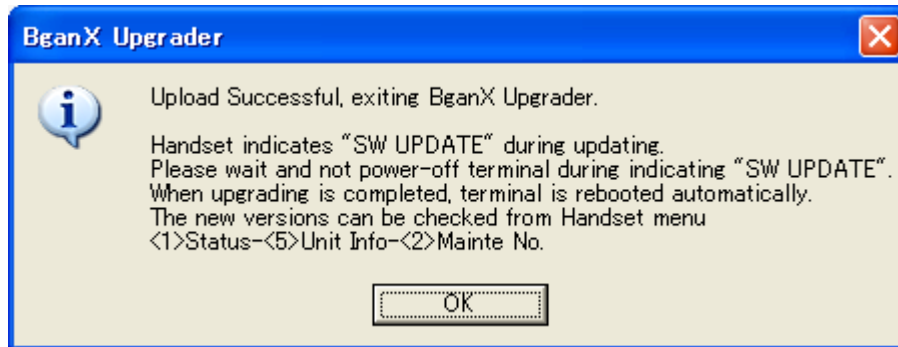
e.g. When the BDE's IP address is 192.168.128.100



6. [Upgrade] button turns to active when installation is ready. Click [Upgrade] button. After that, click [Yes] button in confirmation window. Forwarding of the file is started.



7. Following dialog box is displayed when file forwarding is completed. JUE-500 reboots automatically after several tens of seconds, and starts software updating.
Click [OK] button to close this dialog box.



8. [SW UPDATE] is displayed on the Handset screen during software updating.

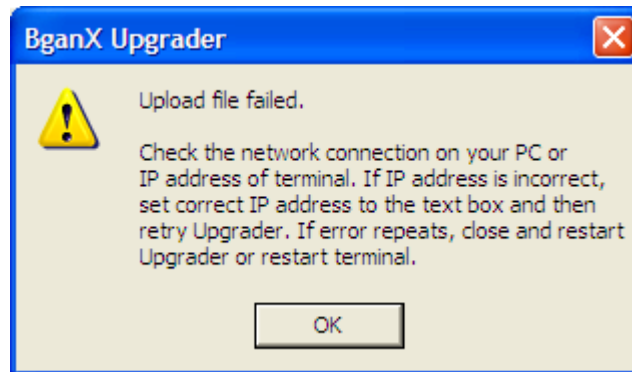


9. JUE-500 reboots when software updating is successfully completed.

9.1. When software update is failed

Update has failed when following message is generated.

- A) [Upload file failed] dialog box is displayed on the PC.



- B) [BDE Update Error] or [ADE Update Error] is displayed on the Handset screen.

BDE Update
Error X

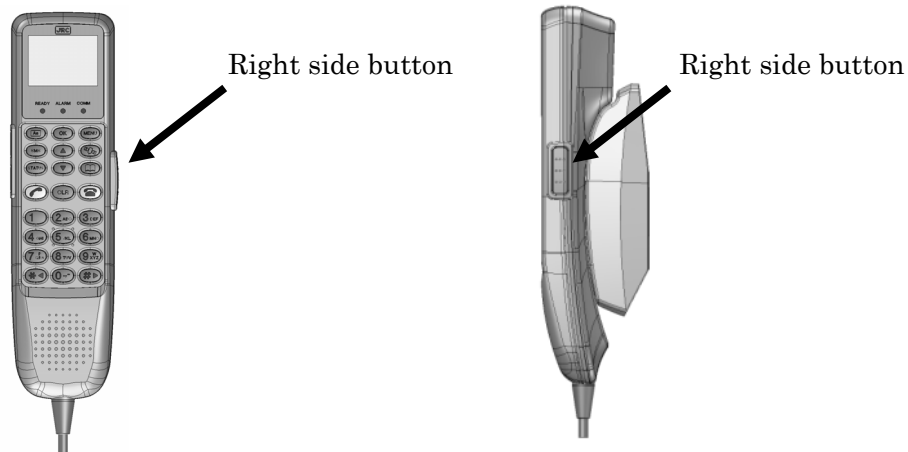
ADE Update
Error X

- C) Although the software is transferred and JUE-500 rebooted, updating is not completed even past 25 minutes or more since its start.

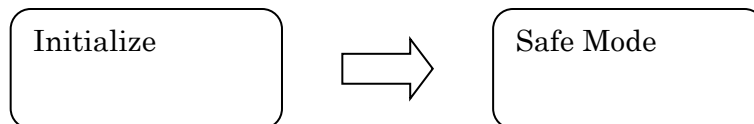
To improve the above error mentioned in a) to c), update again with referring to [Recovery procedure when software update is failed] (next page).

9.2. Recovery procedure when software update is failed

- A) Turn OFF the power supply of JUE-500.
- B) Quit [JUE-500 Upgrader], if it is still activating.
- C) Turn ON the power supply of JUE-500 with pressing the right side button of the Handset.



- D) Leave your finger from PTT button when Ready LED of BDE starts to blink.
- E) Confirm the Handset screen transition, it displays [Initialize] and [Safe Mode].

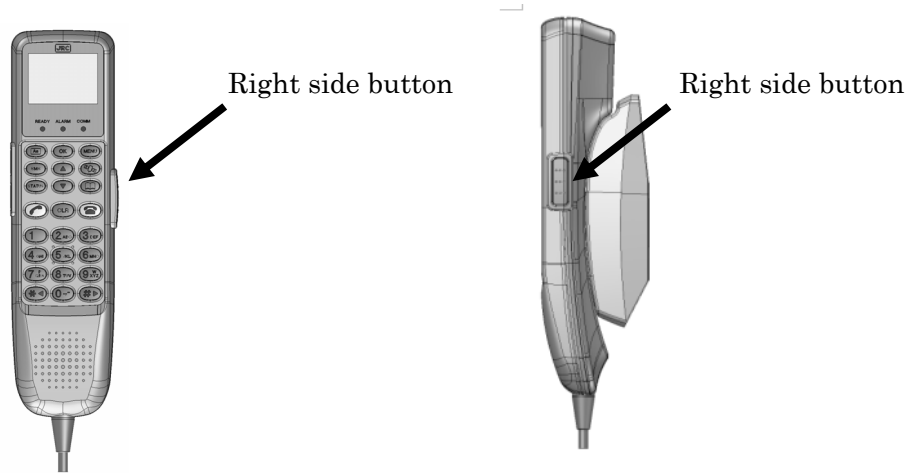


- F) Repeat from the 2nd procedure of [3 . Update JUE-500 software].

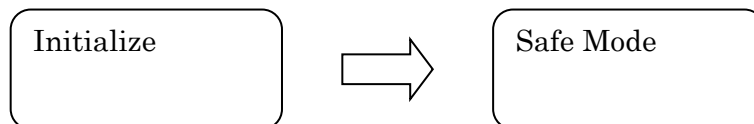
9.3. Software downgrading procedure

If you have any problems caused by upgrading, you can downgrade the software.

- A) Turn OFF the power supply of JUE-500.
- B) Quit [JUE-500 Upgrader], if it is still activating.
- C) Turn ON the power supply of JUE-500 with pressing the right side button of the Handset.



- D) Leave your finger from PTT button when Ready LED of BDE starts to blink.
- E) Confirm the Handset screen transition, it displays [Initialize] and [Safe Mode].



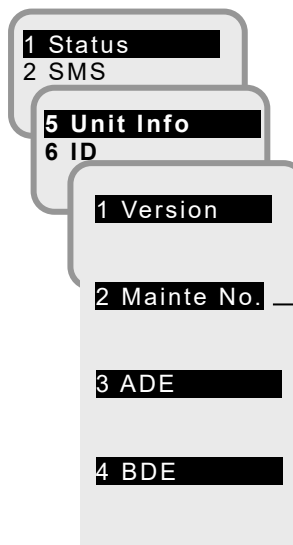
- F) Repeat from the 2nd procedure of [3 . Update JUE-500 software]. Use [JUE-500_1xxx.exe] in CD-ROM of JUE-500 to execute, instead of the downloaded file [JUE-500_1xxx.exe].

4. Confirm the updated software version

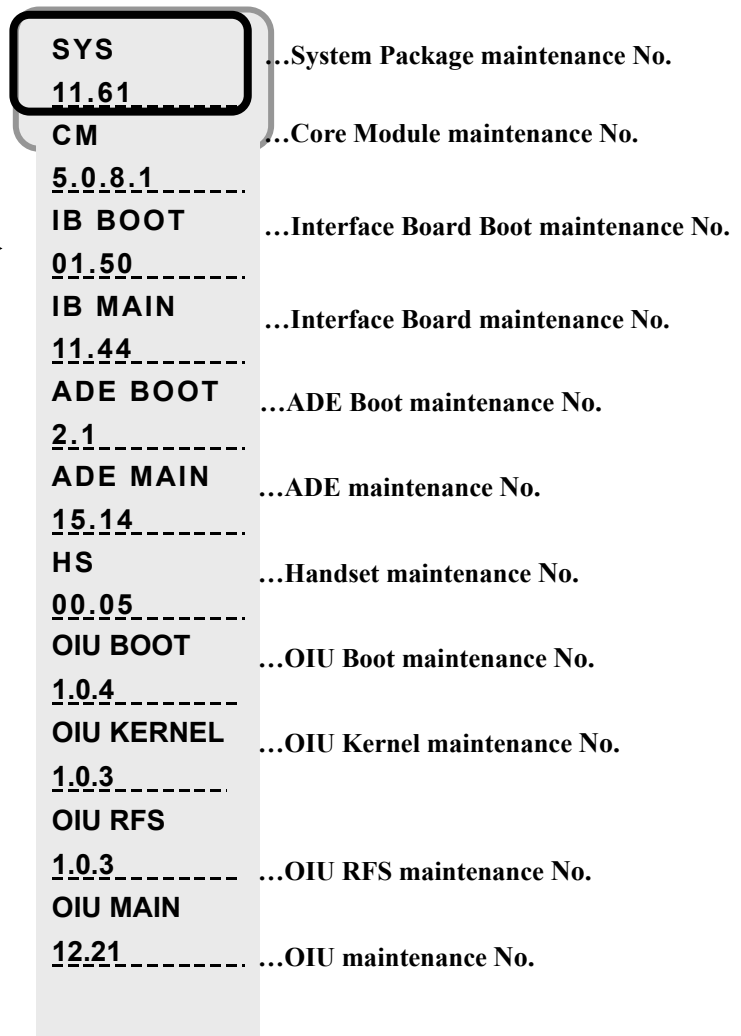
Check that the software version is correctly updated or not, from the following the Handset menu,
<1> Status - <5> Unit Info - <2> Mainte No. - SYS

When the update is succeeded, SYS No. is changed to the same number as the [1xxx] of the software file [JUE-500_1xxx.exe]

Unit Info menu screen



2. Mainte No. display screen



Setting List

Item	Default	Setting
SMS Service Center Address (SCA)	00870772001799	
SMS Validity	1 Day	
SMS Class	3	
SMS Send Status Report	OFF	
SMS Send Character Code	GSM7	
SMS Signature	OFF	
Delivery date	2007/01/01	
Time differences from UTC	+00:00	
Main unit LED ON/OFF	ON	
Selection of satellite tracking method	AUTO	
Use of Secret code for a call from Handset port	OFF	
Use of Secret code for a call from TEL1 port	OFF	
Use of Secret code for a call from TEL2 port	OFF	
Volume level of Handset port	NORMAL	
Volume level of TEL1 port	NORMAL	
Volume level of TEL2 port	NORMAL	
COMM TYPE of TEL1 port	VOICE	
COMM TYPE of TEL2 port	VOICE	
Call Request of Handset port	ON	
Call Request of TEL1 port	ON	
Call Request of TEL2 port	ON	
Call Reception of Handset port	ON	
Call Reception of TEL1 port	ON	
Call Reception of TEL2 port	ON	
Voice-MSN of ISDN	1	
Audio-MSN of ISDN	2	
UDI-MSN of ISDN	3	
RDI-MSN of ISDN	3	
Backlight dimmer of Handset	3	
Brightness of Handset LED lamps	3	
Ringer pattern of Handset	1	
Ringer volume of Handset	2	
Voice volume of Handset	2	
ON/OFF of key click sound of Handset	ON	
IP Address	192.168.128.100	
SUBNET MASK	255.255.255.0	
DHCP ON/OFF	ON (YES)	
Minimum allocation IP address for DHCP	192.168.128.101	
Total amount of allocatable IP address number	154	

Item		Default	Setting
USER REGISTRATION No.1	USER	ADMIN	
USER REGISTRATION No.1	CODE	0001	
USER REGISTRATION No.1	STANDARD	MANUAL	
USER REGISTRATION No.1	STREAMING	MANUAL	
USER REGISTRATION No.1	Single/Multi	SINGLE	
USER REGISTRATION No.2	USER	(empty)	
USER REGISTRATION No.2	CODE	(empty)	
USER REGISTRATION No.2	STANDARD	MANUAL	
USER REGISTRATION No.2	STREAMING	MANUAL	
USER REGISTRATION No.2	Single/Multi	SINGLE	
USER REGISTRATION No.3	USER	(empty)	
USER REGISTRATION No.3	CODE	(empty)	
USER REGISTRATION No.3	STANDARD	MANUAL	
USER REGISTRATION No.3	STREAMING	MANUAL	
USER REGISTRATION No.3	Single/Multi	SINGLE	
USER REGISTRATION No.4	USER	(empty)	
USER REGISTRATION No.4	CODE	(empty)	
USER REGISTRATION No.4	STANDARD	MANUAL	
USER REGISTRATION No.4	STREAMING	MANUAL	
USER REGISTRATION No.4	Single/Multi	SINGLE	
USER REGISTRATION No.5	USER	(empty)	
USER REGISTRATION No.5	CODE	(empty)	
USER REGISTRATION No.5	STANDARD	MANUAL	
USER REGISTRATION No.5	STREAMING	MANUAL	
USER REGISTRATION No.5	Single/Multi	SINGLE	
USER REGISTRATION No.6	USER	(empty)	
USER REGISTRATION No.6	CODE	(empty)	
USER REGISTRATION No.6	STANDARD	MANUAL	
USER REGISTRATION No.6	STREAMING	MANUAL	
USER REGISTRATION No.6	Single/Multi	SINGLE	
USER REGISTRATION No.7	USER	(empty)	
USER REGISTRATION No.7	CODE	(empty)	
USER REGISTRATION No.7	STANDARD	MANUAL	
USER REGISTRATION No.7	STREAMING	MANUAL	
USER REGISTRATION No.7	Single/Multi	SINGLE	
USER REGISTRATION No.8	USER	(empty)	
USER REGISTRATION No.8	CODE	(empty)	
USER REGISTRATION No.8	STANDARD	MANUAL	
USER REGISTRATION No.8	STREAMING	MANUAL	
USER REGISTRATION No.8	Single/Multi	SINGLE	
USER REGISTRATION No.9	USER	(empty)	
USER REGISTRATION No.9	CODE	(empty)	
USER REGISTRATION No.9	STANDARD	MANUAL	
USER REGISTRATION No.9	STREAMING	MANUAL	
USER REGISTRATION No.9	Single/Multi	SINGLE	

Item		Default	Setting
USER REGISTRATION No.10	USER	(empty)	
USER REGISTRATION No.10	CODE	(empty)	
USER REGISTRATION No.10	STANDARD	MANUAL	
USER REGISTRATION No.10	STREAMING	MANUAL	
USER REGISTRATION No.10	Single/Multi	SINGLE	
USER REGISTRATION No.11	USER	(empty)	
USER REGISTRATION No.11	CODE	(empty)	
USER REGISTRATION No.11	STANDARD	MANUAL	
USER REGISTRATION No.11	STREAMING	MANUAL	
USER REGISTRATION No.11	Single/Multi	SINGLE	
USER REGISTRATION No.12	USER	(empty)	
USER REGISTRATION No.12	CODE	(empty)	
USER REGISTRATION No.12	STANDARD	MANUAL	
USER REGISTRATION No.12	STREAMING	MANUAL	
USER REGISTRATION No.12	Single/Multi	SINGLE	
USER REGISTRATION No.13	USER	(empty)	
USER REGISTRATION No.13	CODE	(empty)	
USER REGISTRATION No.13	STANDARD	MANUAL	
USER REGISTRATION No.13	STREAMING	MANUAL	
USER REGISTRATION No.13	Single/Multi	SINGLE	
USER REGISTRATION No.14	USER	(empty)	
USER REGISTRATION No.14	CODE	(empty)	
USER REGISTRATION No.14	STANDARD	MANUAL	
USER REGISTRATION No.14	STREAMING	MANUAL	
USER REGISTRATION No.14	Single/Multi	SINGLE	
USER REGISTRATION No.15	USER	(empty)	
USER REGISTRATION No.15	CODE	(empty)	
USER REGISTRATION No.15	STANDARD	MANUAL	
USER REGISTRATION No.15	STREAMING	MANUAL	
USER REGISTRATION No.15	Single/Multi	SINGLE	
USER REGISTRATION No.16	USER	(empty)	
USER REGISTRATION No.16	CODE	(empty)	
USER REGISTRATION No.16	STANDARD	MANUAL	
USER REGISTRATION No.16	STREAMING	MANUAL	
USER REGISTRATION No.16	Single/Multi	SINGLE	
USER REGISTRATION No.17	USER	(empty)	
USER REGISTRATION No.17	CODE	(empty)	
USER REGISTRATION No.17	STANDARD	MANUAL	
USER REGISTRATION No.17	STREAMING	MANUAL	
USER REGISTRATION No.17	Single/Multi	SINGLE	
USER REGISTRATION No.18	USER	(empty)	
USER REGISTRATION No.18	CODE	(empty)	
USER REGISTRATION No.18	STANDARD	MANUAL	
USER REGISTRATION No.18	STREAMING	MANUAL	
USER REGISTRATION No.18	Single/Multi	SINGLE	
USER REGISTRATION No.19	USER	(empty)	
USER REGISTRATION No.19	CODE	(empty)	
USER REGISTRATION No.19	STANDARD	MANUAL	
USER REGISTRATION No.19	STREAMING	MANUAL	
USER REGISTRATION No.19	Single/Multi	SINGLE	

Item		Default	Setting
USER REGISTRATION No.20	USER	(empty)	
USER REGISTRATION No.20	CODE	(empty)	
USER REGISTRATION No.20	STANDARD	MANUAL	
USER REGISTRATION No.20	STREAMING	MANUAL	
USER REGISTRATION No.20	Single/Multi	SINGLE	
USER REGISTRATION No.21	USER	(empty)	
USER REGISTRATION No.21	CODE	(empty)	
USER REGISTRATION No.21	STANDARD	MANUAL	
USER REGISTRATION No.22	STREAMING	MANUAL	
USER REGISTRATION No.22	Single/Multi	SINGLE	
USER REGISTRATION No.22	USER	(empty)	
USER REGISTRATION No.22	CODE	(empty)	
USER REGISTRATION No.22	STANDARD	MANUAL	
USER REGISTRATION No.22	STREAMING	MANUAL	
USER REGISTRATION No.22	Single/Multi	SINGLE	
USER REGISTRATION No.23	USER	(empty)	
USER REGISTRATION No.23	CODE	(empty)	
USER REGISTRATION No.23	STANDARD	MANUAL	
USER REGISTRATION No.23	STREAMING	MANUAL	
USER REGISTRATION No.23	Single/Multi	SINGLE	
USER REGISTRATION No.21	USER	(empty)	
USER REGISTRATION No.24	CODE	(empty)	
USER REGISTRATION No.24	STANDARD	MANUAL	
USER REGISTRATION No.24	STREAMING	MANUAL	
USER REGISTRATION No.24	Single/Multi	SINGLE	
USER REGISTRATION No.25	USER	(empty)	
USER REGISTRATION No.25	CODE	(empty)	
USER REGISTRATION No.25	STANDARD	MANUAL	
USER REGISTRATION No.25	STREAMING	MANUAL	
USER REGISTRATION No.25	Single/Multi	SINGLE	
USER REGISTRATION No.26	USER	(empty)	
USER REGISTRATION No.26	CODE	(empty)	
USER REGISTRATION No.26	STANDARD	MANUAL	
USER REGISTRATION No.26	STREAMING	MANUAL	
USER REGISTRATION No.26	Single/Multi	SINGLE	
USER REGISTRATION No.27	USER	(empty)	
USER REGISTRATION No.27	CODE	(empty)	
USER REGISTRATION No.27	STANDARD	MANUAL	
USER REGISTRATION No.27	STREAMING	MANUAL	
USER REGISTRATION No.27	Single/Multi	SINGLE	
USER REGISTRATION No.28	USER	(empty)	
USER REGISTRATION No.28	CODE	(empty)	
USER REGISTRATION No.28	STANDARD	MANUAL	
USER REGISTRATION No.28	STREAMING	MANUAL	
USER REGISTRATION No.28	Single/Multi	SINGLE	
USER REGISTRATION No.29	USER	(empty)	
USER REGISTRATION No.29	CODE	(empty)	
USER REGISTRATION No.29	STANDARD	MANUAL	
USER REGISTRATION No.29	STREAMING	MANUAL	
USER REGISTRATION No.29	Single/Multi	SINGLE	

Item		Default	Setting
USER REGISTRATION No.30	USER	(empty)	
USER REGISTRATION No.30	CODE	(empty)	
USER REGISTRATION No.30	STANDARD	MANUAL	
USER REGISTRATION No.30	STREAMING	MANUAL	
USER REGISTRATION No.30	Single/Multi	SINGLE	
USER REGISTRATION No.31	USER	(empty)	
USER REGISTRATION No.31	CODE	(empty)	
USER REGISTRATION No.31	STANDARD	MANUAL	
USER REGISTRATION No.31	STREAMING	MANUAL	
USER REGISTRATION No.31	Single/Multi	SINGLE	
USER REGISTRATION No.32	USER	(empty)	
USER REGISTRATION No.32	CODE	(empty)	
USER REGISTRATION No.32	STANDARD	MANUAL	
USER REGISTRATION No.32	STREAMING	MANUAL	
USER REGISTRATION No.32	Single/Multi	SINGLE	
USER REGISTRATION No.33	USER	(empty)	
USER REGISTRATION No.33	CODE	(empty)	
USER REGISTRATION No.33	STANDARD	MANUAL	
USER REGISTRATION No.33	STREAMING	MANUAL	
USER REGISTRATION No.33	Single/Multi	SINGLE	
USER REGISTRATION No.34	USER	(empty)	
USER REGISTRATION No.34	CODE	(empty)	
USER REGISTRATION No.34	STANDARD	MANUAL	
USER REGISTRATION No.34	STREAMING	MANUAL	
USER REGISTRATION No.34	Single/Multi	SINGLE	
USER REGISTRATION No.35	USER	(empty)	
USER REGISTRATION No.35	CODE	(empty)	
USER REGISTRATION No.35	STANDARD	MANUAL	
USER REGISTRATION No.35	STREAMING	MANUAL	
USER REGISTRATION No.35	Single/Multi	SINGLE	
USER REGISTRATION No.36	USER	(empty)	
USER REGISTRATION No.36	CODE	(empty)	
USER REGISTRATION No.36	STANDARD	MANUAL	
USER REGISTRATION No.36	STREAMING	MANUAL	
USER REGISTRATION No.36	Single/Multi	SINGLE	
USER REGISTRATION No.37	USER	(empty)	
USER REGISTRATION No.37	CODE	(empty)	
USER REGISTRATION No.37	STANDARD	MANUAL	
USER REGISTRATION No.37	STREAMING	MANUAL	
USER REGISTRATION No.37	Single/Multi	SINGLE	
USER REGISTRATION No.38	USER	(empty)	
USER REGISTRATION No.38	CODE	(empty)	
USER REGISTRATION No.38	STANDARD	MANUAL	
USER REGISTRATION No.38	STREAMING	MANUAL	
USER REGISTRATION No.38	Single/Multi	SINGLE	
USER REGISTRATION No.39	USER	(empty)	
USER REGISTRATION No.39	CODE	(empty)	
USER REGISTRATION No.39	STANDARD	MANUAL	
USER REGISTRATION No.39	STREAMING	MANUAL	
USER REGISTRATION No.39	Single/Multi	SINGLE	

Item		Default	Setting
USER REGISTRATION No.40	USER	(empty)	
USER REGISTRATION No.40	CODE	(empty)	
USER REGISTRATION No.40	STANDARD	MANUAL	
USER REGISTRATION No.40	STREAMING	MANUAL	
USER REGISTRATION No.40	Single/Multi	SINGLE	
USER REGISTRATION No.41	USER	(empty)	
USER REGISTRATION No.41	CODE	(empty)	
USER REGISTRATION No.41	STANDARD	MANUAL	
USER REGISTRATION No.41	STREAMING	MANUAL	
USER REGISTRATION No.41	Single/Multi	SINGLE	
USER REGISTRATION No.42	USER	(empty)	
USER REGISTRATION No.42	CODE	(empty)	
USER REGISTRATION No.42	STANDARD	MANUAL	
USER REGISTRATION No.42	STREAMING	MANUAL	
USER REGISTRATION No.42	Single/Multi	SINGLE	
USER REGISTRATION No.43	USER	(empty)	
USER REGISTRATION No.43	CODE	(empty)	
USER REGISTRATION No.43	STANDARD	MANUAL	
USER REGISTRATION No.43	STREAMING	MANUAL	
USER REGISTRATION No.43	Single/Multi	SINGLE	
USER REGISTRATION No.44	USER	(empty)	
USER REGISTRATION No.44	CODE	(empty)	
USER REGISTRATION No.44	STANDARD	MANUAL	
USER REGISTRATION No.44	STREAMING	MANUAL	
USER REGISTRATION No.44	Single/Multi	SINGLE	
USER REGISTRATION No.45	USER	(empty)	
USER REGISTRATION No.45	CODE	(empty)	
USER REGISTRATION No.45	STANDARD	MANUAL	
USER REGISTRATION No.45	STREAMING	MANUAL	
USER REGISTRATION No.45	Single/Multi	SINGLE	
USER REGISTRATION No.46	USER	(empty)	
USER REGISTRATION No.46	CODE	(empty)	
USER REGISTRATION No.46	STANDARD	MANUAL	
USER REGISTRATION No.46	STREAMING	MANUAL	
USER REGISTRATION No.46	Single/Multi	SINGLE	
USER REGISTRATION No.47	USER	(empty)	
USER REGISTRATION No.47	CODE	(empty)	
USER REGISTRATION No.47	STANDARD	MANUAL	
USER REGISTRATION No.47	STREAMING	MANUAL	
USER REGISTRATION No.47	Single/Multi	SINGLE	
USER REGISTRATION No.48	USER	(empty)	
USER REGISTRATION No.48	CODE	(empty)	
USER REGISTRATION No.48	STANDARD	MANUAL	
USER REGISTRATION No.48	STREAMING	MANUAL	
USER REGISTRATION No.48	Single/Multi	SINGLE	
USER REGISTRATION No.49	USER	(empty)	
USER REGISTRATION No.49	CODE	(empty)	
USER REGISTRATION No.49	STANDARD	MANUAL	
USER REGISTRATION No.49	STREAMING	MANUAL	
USER REGISTRATION No.49	Single/Multi	SINGLE	
USER REGISTRATION No.50	USER	(empty)	
USER REGISTRATION No.50	CODE	(empty)	
USER REGISTRATION No.50	STANDARD	MANUAL	
USER REGISTRATION No.50	STREAMING	MANUAL	
USER REGISTRATION No.50	Single/Multi	SINGLE	

Item	Default	Setting
Maximum connecting time of Handset port (Auto DCN.)	0 (unlimited)	
Maximum connecting time of TEL1 port (Auto DCN.)	0 (unlimited)	
Maximum connecting time of TEL2 port (Auto DCN.)	0 (unlimited)	
Maximum connecting time of ISDN port (Auto DCN.)	0 (unlimited)	
Maximum connecting time of STREAMING communication port (USB/Ethernet) (Auto DCN.)	0 (unlimited)	
Maximum Idle connecting time of STANDARD communication port (USB/Ethernet) (Auto DCN.)	OFF (unlimited)	
Setting of SIM PIN	Depend on SIM	
PIN input operation ON/OFF	Depend on SIM	
APN Profile Profile 1 Name	Profile 1	
APN Profile Profile 1 APN setting	SIM default	
APN Profile Profile 1 APN	(empty)	
APN Profile Profile 1 User	(empty)	
APN Profile Profile 1 Pass	(empty)	
APN Profile Profile 1 Global IP setting	Dynamic	
APN Profile Profile 1 Global IP address	(empty)	
APN Profile Profile 2 Name	Profile 2	
APN Profile Profile 2 APN setting	SIM default	
APN Profile Profile 2 APN	(empty)	
APN Profile Profile 2 User	(empty)	
APN Profile Profile 2 Pass	(empty)	
APN Profile Profile 2 Global IP setting	Dynamic	
APN Profile Profile 2 Global IP address	(empty)	
APN Profile Profile 3 Name	Profile 3	
APN Profile Profile 3 APN setting	SIM default	
APN Profile Profile 3 APN	(empty)	
APN Profile Profile 3 User	(empty)	
APN Profile Profile 3 Pass	(empty)	
APN Profile Profile 3 Global IP setting	Dynamic	
APN Profile Profile 3 Global IP address	(empty)	
APN Profile Profile 4 Name	Profile 4	
APN Profile Profile 4 APN setting	SIM default	
APN Profile Profile 4 APN	(empty)	
APN Profile Profile 4 User	(empty)	
APN Profile Profile 4 Pass	(empty)	
APN Profile Profile 4 Global IP setting	Dynamic	
APN Profile Profile 4 Global IP address	(empty)	
APN Profile Profile 5 Name	Profile 5	
APN Profile Profile 5 APN setting	SIM default	
APN Profile Profile 5 APN	(empty)	
APN Profile Profile 5 User	(empty)	
APN Profile Profile 5 Pass	(empty)	
APN Profile Profile 5 Global IP setting	Dynamic	
APN Profile Profile 5 Global IP address	(empty)	

Item		Default	Setting
Packet Filter No.1	Priority	(empty)	
Packet Filter No.1	Action	Pass	
Packet Filter No.1	Direction	Outgoing	
Packet Filter No.1	Protocol	ALL	
Packet Filter No.1	Destination IP	(empty)	
Packet Filter No.1	Destination Port range	(empty)	
Packet Filter No.1	Source IP	(empty)	
Packet Filter No.1	Source Port range	(empty)	
Packet Filter No.2	Priority	(empty)	
Packet Filter No.2	Action	Pass	
Packet Filter No.2	Direction	Outgoing	
Packet Filter No.2	Protocol	ALL	
Packet Filter No.2	Destination IP	(empty)	
Packet Filter No.2	Destination Port range	(empty)	
Packet Filter No.2	Source IP	(empty)	
Packet Filter No.2	Source Port range	(empty)	
Packet Filter No.3	Priority	(empty)	
Packet Filter No.3	Action	Pass	
Packet Filter No.3	Direction	Outgoing	
Packet Filter No.3	Protocol	ALL	
Packet Filter No.3	Destination IP	(empty)	
Packet Filter No.3	Destination Port range	(empty)	
Packet Filter No.3	Source IP	(empty)	
Packet Filter No.3	Source Port range	(empty)	
Packet Filter No.4	Priority	(empty)	
Packet Filter No.4	Action	Pass	
Packet Filter No.4	Direction	Outgoing	
Packet Filter No.4	Protocol	ALL	
Packet Filter No.4	Destination IP	(empty)	
Packet Filter No.4	Destination Port range	(empty)	
Packet Filter No.4	Source IP	(empty)	
Packet Filter No.4	Source Port range	(empty)	
Packet Filter No.5	Priority	(empty)	
Packet Filter No.5	Action	Pass	
Packet Filter No.5	Direction	Outgoing	
Packet Filter No.5	Protocol	ALL	
Packet Filter No.5	Destination IP	(empty)	
Packet Filter No.5	Destination Port range	(empty)	
Packet Filter No.5	Source IP	(empty)	
Packet Filter No.5	Source Port range	(empty)	
Packet Filter No.6	Priority	(empty)	
Packet Filter No.6	Action	Pass	
Packet Filter No.6	Direction	Outgoing	
Packet Filter No.6	Protocol	ALL	
Packet Filter No.6	Destination IP	(empty)	
Packet Filter No.6	Destination Port range	(empty)	
Packet Filter No.6	Source IP	(empty)	
Packet Filter No.6	Source Port range	(empty)	
Packet Filter No.7	Priority	(empty)	
Packet Filter No.7	Action	Pass	
Packet Filter No.7	Direction	Outgoing	
Packet Filter No.7	Protocol	ALL	
Packet Filter No.7	Destination IP	(empty)	
Packet Filter No.7	Destination Port range	(empty)	
Packet Filter No.7	Source IP	(empty)	
Packet Filter No.7	Source Port range	(empty)	

Item	Default	Setting
Packet Filter No.8 Priority	(empty)	
Packet Filter No.8 Action	Pass	
Packet Filter No.8 Direction	Outgoing	
Packet Filter No.8 Protocol	ALL	
Packet Filter No.8 Destination IP	(empty)	
Packet Filter No.8 Destination Port range	(empty)	
Packet Filter No.8 Source IP	(empty)	
Packet Filter No.8 Source Port range	(empty)	
Packet Filter No.9 Priority	(empty)	
Packet Filter No.9 Action	Pass	
Packet Filter No.9 Direction	Outgoing	
Packet Filter No.9 Protocol	ALL	
Packet Filter No.9 Destination IP	(empty)	
Packet Filter No.9 Destination Port range	(empty)	
Packet Filter No.9 Source IP	(empty)	
Packet Filter No.9 Source Port range	(empty)	
Packet Filter No.10 Priority	(empty)	
Packet Filter No.10 Action	Pass	
Packet Filter No.10 Direction	Outgoing	
Packet Filter No.10 Protocol	ALL	
Packet Filter No.10 Destination IP	(empty)	
Packet Filter No.10 Destination Port range	(empty)	
Packet Filter No.10 Source IP	(empty)	
Packet Filter No.10 Source Port range	(empty)	
Packet Filter No.11 Priority	(empty)	
Packet Filter No.11 Action	Pass	
Packet Filter No.11 Direction	Outgoing	
Packet Filter No.11 Protocol	ALL	
Packet Filter No.11 Destination IP	(empty)	
Packet Filter No.11 Destination Port range	(empty)	
Packet Filter No.11 Source IP	(empty)	
Packet Filter No.11 Source Port range	(empty)	
Packet Filter No.12 Priority	(empty)	
Packet Filter No.12 Action	Pass	
Packet Filter No.12 Direction	Outgoing	
Packet Filter No.12 Protocol	ALL	
Packet Filter No.12 Destination IP	(empty)	
Packet Filter No.12 Destination Port range	(empty)	
Packet Filter No.12 Source IP	(empty)	
Packet Filter No.12 Source Port range	(empty)	
Packet Filter No.13 Priority	(empty)	
Packet Filter No.13 Action	Pass	
Packet Filter No.13 Direction	Outgoing	
Packet Filter No.13 Protocol	ALL	
Packet Filter No.13 Destination IP	(empty)	
Packet Filter No.13 Destination Port range	(empty)	
Packet Filter No.13 Source IP	(empty)	
Packet Filter No.13 Source Port range	(empty)	
Packet Filter No.14 Priority	(empty)	
Packet Filter No.14 Action	Pass	
Packet Filter No.14 Direction	Outgoing	
Packet Filter No.14 Protocol	ALL	
Packet Filter No.14 Destination IP	(empty)	
Packet Filter No.14 Destination Port range	(empty)	
Packet Filter No.14 Source IP	(empty)	
Packet Filter No.14 Source Port range	(empty)	

Item		Default	Setting
Packet Filter No.15	Priority	(empty)	
Packet Filter No.15	Action	Pass	
Packet Filter No.15	Direction	Outgoing	
Packet Filter No.15	Protocol	ALL	
Packet Filter No.15	Destination IP	(empty)	
Packet Filter No.15	Destination Port range	(empty)	
Packet Filter No.15	Source IP	(empty)	
Packet Filter No.15	Source Port range	(empty)	
Packet Filter No.16	Priority	(empty)	
Packet Filter No.16	Action	Pass	
Packet Filter No.16	Direction	Outgoing	
Packet Filter No.16	Protocol	ALL	
Packet Filter No.16	Destination IP	(empty)	
Packet Filter No.16	Destination Port range	(empty)	
Packet Filter No.16	Source IP	(empty)	
Packet Filter No.16	Source Port range	(empty)	
Packet Filter No.17	Priority	(empty)	
Packet Filter No.17	Action	Pass	
Packet Filter No.17	Direction	Outgoing	
Packet Filter No.17	Protocol	ALL	
Packet Filter No.17	Destination IP	(empty)	
Packet Filter No.17	Destination Port range	(empty)	
Packet Filter No.17	Source IP	(empty)	
Packet Filter No.17	Source Port range	(empty)	
Packet Filter No.18	Priority	(empty)	
Packet Filter No.18	Action	Pass	
Packet Filter No.18	Direction	Outgoing	
Packet Filter No.18	Protocol	ALL	
Packet Filter No.18	Destination IP	(empty)	
Packet Filter No.18	Destination Port range	(empty)	
Packet Filter No.18	Source IP	(empty)	
Packet Filter No.18	Source Port range	(empty)	
Packet Filter No.19	Priority	(empty)	
Packet Filter No.19	Action	Pass	
Packet Filter No.19	Direction	Outgoing	
Packet Filter No.19	Protocol	ALL	
Packet Filter No.19	Destination IP	(empty)	
Packet Filter No.19	Destination Port range	(empty)	
Packet Filter No.19	Source IP	(empty)	
Packet Filter No.19	Source Port range	(empty)	
Packet Filter No.20	Priority	(empty)	
Packet Filter No.20	Action	Pass	
Packet Filter No.20	Direction	Outgoing	
Packet Filter No.20	Protocol	ALL	
Packet Filter No.20	Destination IP	(empty)	
Packet Filter No.20	Destination Port range	(empty)	
Packet Filter No.20	Source IP	(empty)	
Packet Filter No.20	Source Port range	(empty)	

Item		Default	Setting
Packet detection activate No.1	Disable / Enable	Disable (unchecked)	
Packet detection activate No.1	Base IP	192.168.128.101	
Packet detection activate No.1	Count	1	
Packet detection activate No.1	Profile	Profile 1	
Packet detection activate No.2	Disable / Enable	Disable (unchecked)	
Packet detection activate No.2	Base IP	192.168.128.101	
Packet detection activate No.2	Count	1	
Packet detection activate No.2	Profile	Profile 1	
Packet detection activate No.3	Disable / Enable	Disable (unchecked)	
Packet detection activate No.3	Base IP	192.168.128.101	
Packet detection activate No.3	Count	1	
Packet detection activate No.3	Profile	Profile 1	
Packet detection activate No.4	Disable / Enable	Disable (unchecked)	
Packet detection activate No.4	Base IP	192.168.128.101	
Packet detection activate No.4	Count	1	
Packet detection activate No.4	Profile	Profile 1	
Packet detection activate No.5	Disable / Enable	Disable (unchecked)	
Packet detection activate No.5	Base IP	192.168.128.101	
Packet detection activate No.5	Count	1	
Packet detection activate No.5	Profile	Profile 1	
Packet detection activate No.6	Disable / Enable	Disable (unchecked)	
Packet detection activate No.6	Base IP	192.168.128.101	
Packet detection activate No.6	Count	1	
Packet detection activate No.6	Profile	Profile 1	
Always activate Setting 1	Profile	Disable	
Always activate Setting 1	Local IP	0.0.0.0	
Always activate Setting 2	Profile	Disable	
Always activate Setting 2	Local IP	0.0.0.0	
Always activate Setting 3	Profile	Disable	
Always activate Setting 4	Local IP	0.0.0.0	

When you are using OIU:

Item	Default	Setting
Use of Secret code for a call from TEL3 port	OFF	
Use of Secret code for a call from TEL4 port	OFF	
Use of Secret code for a call from TEL5 port	OFF	
Use of Secret code for a call from TEL6 port	OFF	
Volume level of TEL3 port	NORMAL	
Volume level of TEL4 port	NORMAL	
Volume level of TEL5 port	NORMAL	
Volume level of TEL6 port	NORMAL	
COMM TYPE of TEL3 port	VOICE	
COMM TYPE of TEL4 port	VOICE	
COMM TYPE of TEL5 port	VOICE	
COMM TYPE of TEL6 port	VOICE	
Call Request of TEL3 port	ON	
Call Request of TEL4 port	ON	
Call Request of TEL5 port	ON	
Call Request of TEL6 port	ON	
Call Reception of TEL3 port	ON	
Call Reception of TEL4 port	ON	
Call Reception of TEL5 port	ON	
Call Reception of TEL6 port	ON	
Maximum connecting time of TEL3 port (Auto DCN.)	0 (unlimited)	
Maximum connecting time of TEL4 port (Auto DCN.)	0 (unlimited)	
Maximum connecting time of TEL5 port (Auto DCN.)	0 (unlimited)	
Maximum connecting time of TEL6 port (Auto DCN.)	0 (unlimited)	
Voice setting of Buzzer1 port	ON	
Voice setting of Buzzer2 port	ON	
Voice setting of Buzzer3 port	ON	
Voice setting of Buzzer4 port	ON	
Audio setting of Buzzer1 port	ON	
Audio setting of Buzzer2 port	ON	
Audio setting of Buzzer3 port	ON	
Audio setting of Buzzer4 port	ON	
UDI setting of Buzzer1 port	ON	
UDI setting of Buzzer2 port	ON	
UDI setting of Buzzer3 port	ON	
UDI setting of Buzzer4 port	ON	
RDI setting of Buzzer1 port	ON	
RDI setting of Buzzer2 port	ON	
RDI setting of Buzzer3 port	ON	
RDI setting of Buzzer4 port	ON	
ExtGPS	OFF	
Diagnostic	OFF	
OIU IP	192168128001	
OIU SUBNET MASK	2552552550	