

## Technical Notification

Document number: 95-127294

Date: March - 2008

### **New USB driver ver. 1.05 for EXPLORER® 100/110/500/527/700**

#### **Subject:**

Please be informed of the new USB driver version 1.05 released for EXPLORER® 100, 110, 500, 527 and EXPLORER® 700.

#### **Priority:**

- Medium: It is recommended to apply this change / initiative to all units in stock. For units sold it is recommended to apply this change / initiative next time the system(s) is inspected.

Changes from ver. 1.04 to 1.05:

- Added support for Windows Vista 32bit versions

#### **Action:**

Download the file 'T&T\_usbdriver1.05.zip' located in the Thrane & Thrane eSupport Download Center <http://extranet.thrane.com/Support.aspx> and save / extract it on your hard disk.

The following will describe the procedure for installing T&T USB driver ver. 1.05...

## **Windows XP – Windows 2000 USB driver installation / update procedure for EXPLORER® 100/110/500/527/700.**

This procedure describes how to install, or update the T&T USB driver. The installation procedure is based on the pc running **Windows XP Professional Service Pack 2**. “Classic Start menu”

### **Download the USB driver from eSupport download centre.**

<http://extranet.thrane.com/support.aspx>

1. Download the T&T\_usbdriver1.05.zip file to a local folder e.g. C:\T&T\_USB
2. Extract the T&T\_usbdriver1.05.zip file.
3. The folder will now contain the following files. ttxp.inf - ttport.inf - ttxp.sys - ttxp.cat.

### **Important!!**

Pc must be running **Windows XP Professional Service Pack 2 or Windows 2000 service pack 4 or any Windows Vista 32bit version.**

### **Install the USB driver.**

Please be aware that you have to run the procedure below more than once because the EXPLORER® offers you two com ports. They will be installed on your PC by running the Wizard three times.

1. **When / if asked** ‘Can Windows connect to Windows Update to search for software?’
  - **Select** ‘No, not this time’
  - **Select** ‘Next’
2. **When asked** ‘What do you want the wizard to do?’
  - **Select** ‘Install from a list or specific location (Advanced)’
  - **Select** ‘Next’
3. **When asked** ‘Don’t search. I will choose the driver to install’
  - **Select** ‘Next’
  - **Select** ‘Have Disk...’
4. **In the new window** ‘Install From Disk’
  - **Select** ‘Browse...’
  - **Open the directory** C:\T&T\_USB
  - **Select** ‘OK’
  - **Select** ‘Next’
5. **In the new window** ‘Hardware Installation’

- **Select** 'Continue Anyway', if the dialogue shows
6. **When told** 'Completing the Found New Hardware Wizard'
- **Select** 'Finish'

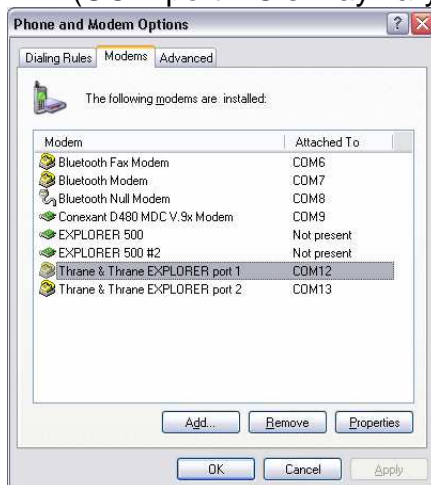
**Note:** The Wizard will run up to **three times!!** - Installing two modems and one Multi-port serial adapter.



## Find the new COM port nr

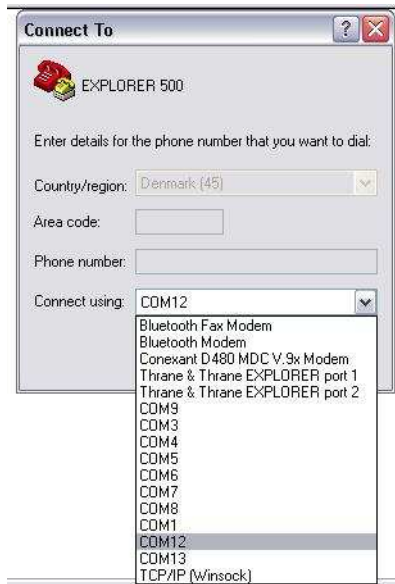
7. Start Control panel – 'Phone an Modem Options'
8. Select 'Modems' and note the COM port assigned to 'Thrane & Thrane EXPLORER® port 1'.

Ex.: (COM port NO's may vary)



9. **In the HyperTerminal menu**
- **Select** 'File->Properties'

- **Select** in 'Connect using' the new COM port which appeared in your COM port list of 'Phone and Modem Options' above.
- **Do not select** 'Thrane & Thrane EXPLORER® port x', you have to select a 'COM' port.



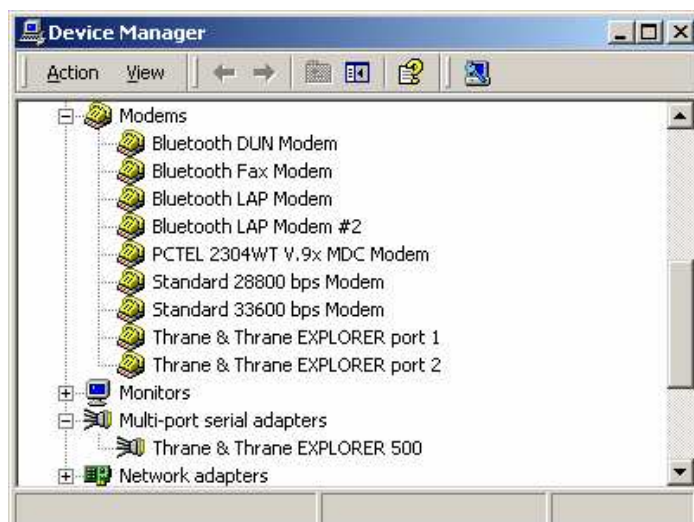
**The number on the com port you have to select may have changed after the installation of the new USB driver**

**10. Test that you have selected the right COM port.**

- **Write** in HyperTerminal the AT command 'ATI'.
- **respond** from the AT shell 'Thrane & Thrane'

## Updating the USB driver.

1. Download the USB driver from Thrane & Thrane Extranet.
  - <http://extranet.thrane.com/support.aspx>
  - Download the T&T\_usbdriver1.05.zip file to a local folder e.g. C:\T&T\_USB
  - Extract the T&T\_usbdriver1.05.zip file.
  - The folder will now contain the following files. ttxp.inf - ttport.inf - ttxp.sys.
2. Select Control Panel\System\Device Manager.
3. Select Modems
4. Locate and select the Thrane & Thrane Explorer port 1.
5. Select properties and update the driver (C:\T&T\_USB)
6. Check that the driver version now is 1.5.0.0
7. Locate and select the Thrane & Thrane Explorer port 2.
8. Select properties and update the driver (C:\T&T\_USB)
9. Check that the driver version now is 1.5.0.0
10. Select Multi-port serial adapters.
11. Locate and select the Thrane & Thrane Explorer 500
12. Select properties and update the driver (C:\T&T\_USB)
13. Check that the driver version now is 1.5.0.0



Thrane & Thrane  
After Sales Service

Author:	Date:	Checked:	Date:	Approved:	Date:
JDO	27-03-2008	CK	28-03-2008	CK	28-03-2008