

# MPDS Configuration Sheet

## Yahoo Messenger



### Pre-requisites:

- o An MPDS capable terminal that is configured for use on your chosen platform
- o Yahoo Messenger installed and a valid Yahoo ID obtained
- o The Yahoo Messenger id/user email address of a remote user

### Notes:

A Yahoo ID can be obtained by filling in the required information at:

[http://edit.yahoo.com/config/eval\\_register?](http://edit.yahoo.com/config/eval_register?)

This document is based on the Windows 2000 Professional operating system and Yahoo Messenger version 5.5.0.1244, however, the operation of the Yahoo Messenger software should be consistent across the Windows platforms

### Installation of Yahoo Messenger 5.5

- o Download the correct version of Messenger for your operating system from the yahoo web-site at:  
<http://messenger.yahoo.com/messenger/download/>
- o Follow the on-screen instructions found at:  
<http://messenger.yahoo.com/messenger/download/dinstructions.html>
- o Messenger will automatically start

### Connecting to Yahoo Messenger

1. Sign in to Yahoo Messenger using the Yahoo ID and password as obtained after registration. Tick any of the options you require and press <Login>.



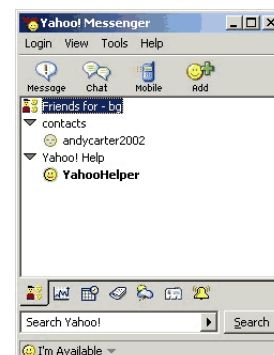
# MPDS Configuration Sheet

## Yahoo Messenger

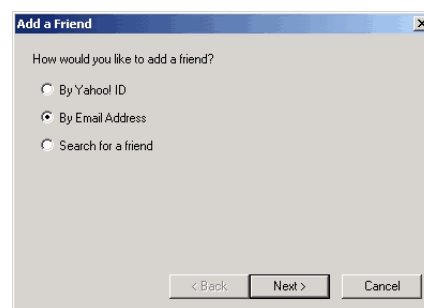


2. Yahoo has the concept of “friends”, these are your remote contacts. When logged in, to communicate with another user you will need to “Add a friend”.

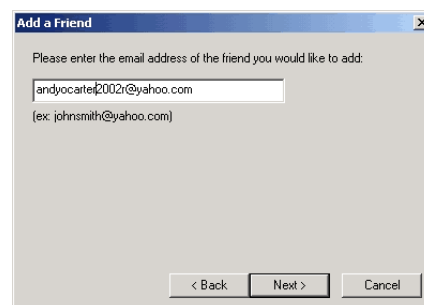
Press the <Add> button on the icon bar, to start the “Add a friend” wizard.



3. Select the “Email address” option and press <Next>.

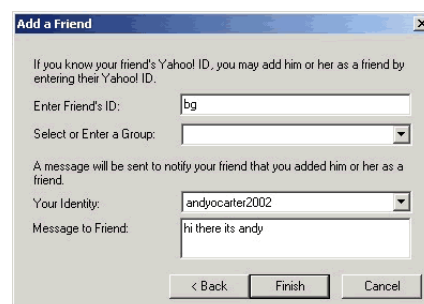


4. Fill in the remote user’s e-mail address in the field provided and click <Next>.



5. You can at this point change the e-mail address to their “Yahoo ID” if it is known to you, and there is also the facility to create a group to add the new “friend” to.

The wizard will send a message to your newly added “friend” to inform them that you have added them to the to your list of “friends” and informing them of your “Yahoo ID”. This message is editable, click <finish> to complete the process.

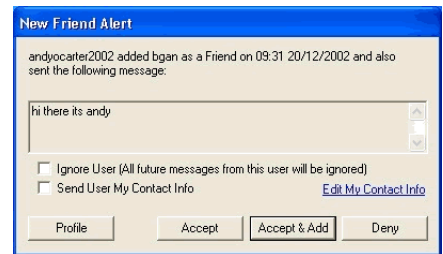


# MPDS Configuration Sheet

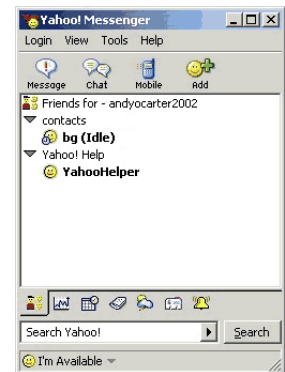
## Yahoo Messenger



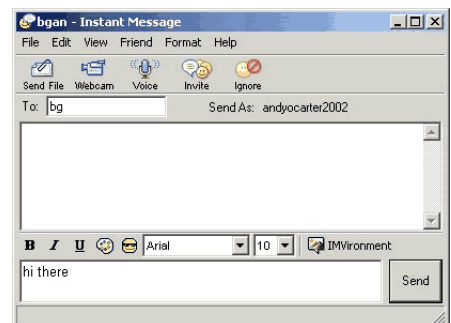
- 6. The message sent is more than just a “hello”, it enables the recipient to accept or deny the contact from you and so constitutes part of the security process.



- 7. When the remote user is online, but not doing anything they will be seen in the Yahoo application as “Idle”.



- 8. By clicking on the “Idle” user the “Instant Message” console appears. Type some text in the lower panel and press the <Send>. You are now communicating using Yahoo Messenger.



### Note

When in an idle state, that is no active communication sessions in progress, Yahoo Messenger sends and receives between 170 and 190 bytes of data every 5 minutes as part of its “stay alive” process. MPDS users might therefore choose to limit costs by running Messenger for only certain periods of the day, or when required.