

MPDS Configuration Sheet

MSN Messenger



Pre-requisites:

- o An MPDS capable terminal that is configured for use on your chosen windows platform
- o Microsoft MS Messenger and Valid .net passport account.
- o The MSN Messenger id/user email address of the remote user.

Note:

A .Net passport account can be obtained by filling in the required information at:

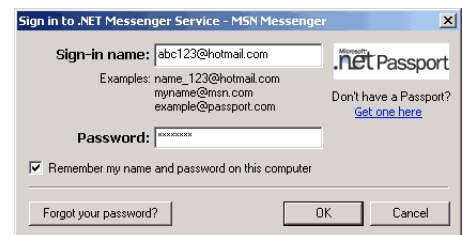
<http://register.passport.net/>

Installation of MSN Messenger 5.0

- o Download the correct version Of MSN Messenger for your operating system from the Microsoft web site at:
<http://messenger.msn.co.uk/download/download.asp>
- o Follow the on screen instructions to install the MSN Messenger application
- o MSN Messenger will automatically start

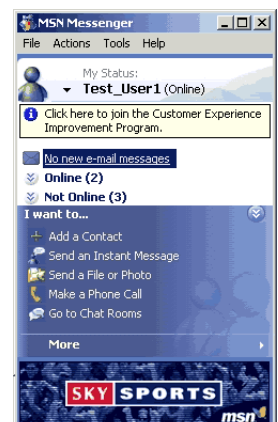
Connecting to MS Messenger

1. Sign in to MSN Messenger using the .net username and password obtained after registration



2. On the MSN Messenger application go to the "I want to..." panel and select "Add a Contact"

The "Add a Contact" wizard will start.



MPDS Configuration Sheet

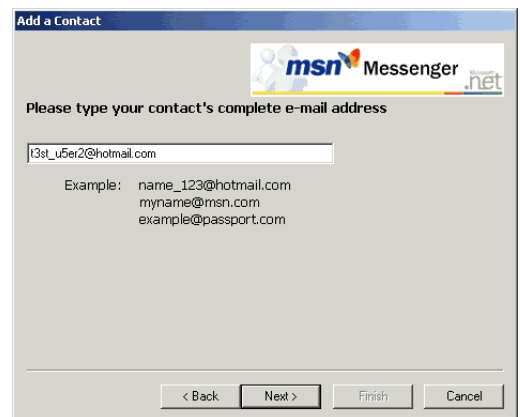
MSN Messenger



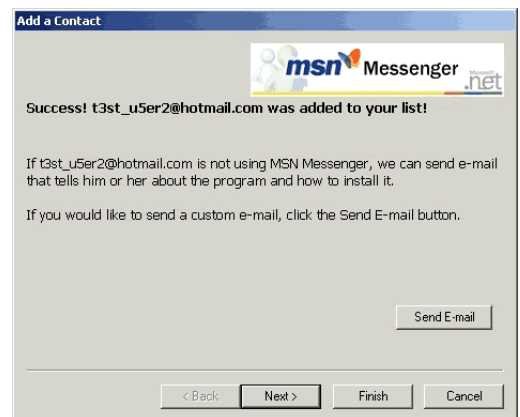
3. Select “By email address or sign in name”



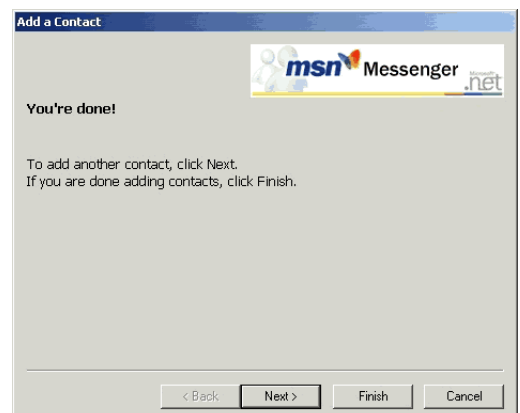
4. Enter the MSN Messenger e-mail address for the person you wish to communicate with and press <Next>.



5. A success message informing you that the user was added to your list will be displayed with the option of sending an e-mail if your contact does not have Messenger installed.



6. Press the <Finish> button to take you back to the application main screen.



MPDS Configuration Sheet

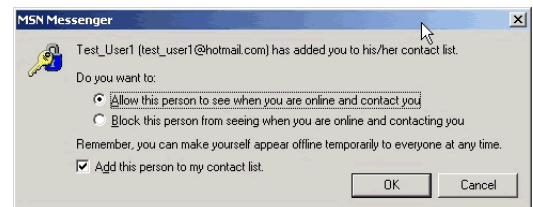
MSN Messenger



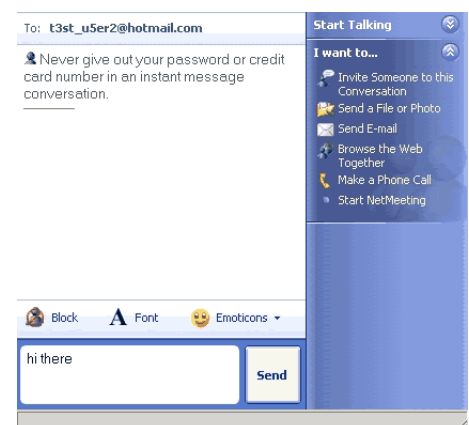
7. The new contact will be added to the contacts field in the messenger application in the “Not Online” section.



8. To make contact with the remote user, Click on the contact name. If the remote user is online, a message will be displayed on their screen informing them that you are attempting contact. This gives them the option to accept or deny the connection.



9. When the remote user accepts the connection a conversation screen opens. To communicate type text in the bottom part of the conversation screen and press the <Send> button.



You are now communicating using Microsoft MSN

Note

When Messenger is in an idle state i.e. when no active communication session is in progress, it sends and receives between 50 and 60 bytes of data every 5 minutes as part of its “stay alive” process. MPDS users might therefore choose to limit costs by running Messenger for only certain periods of the day, or when required.